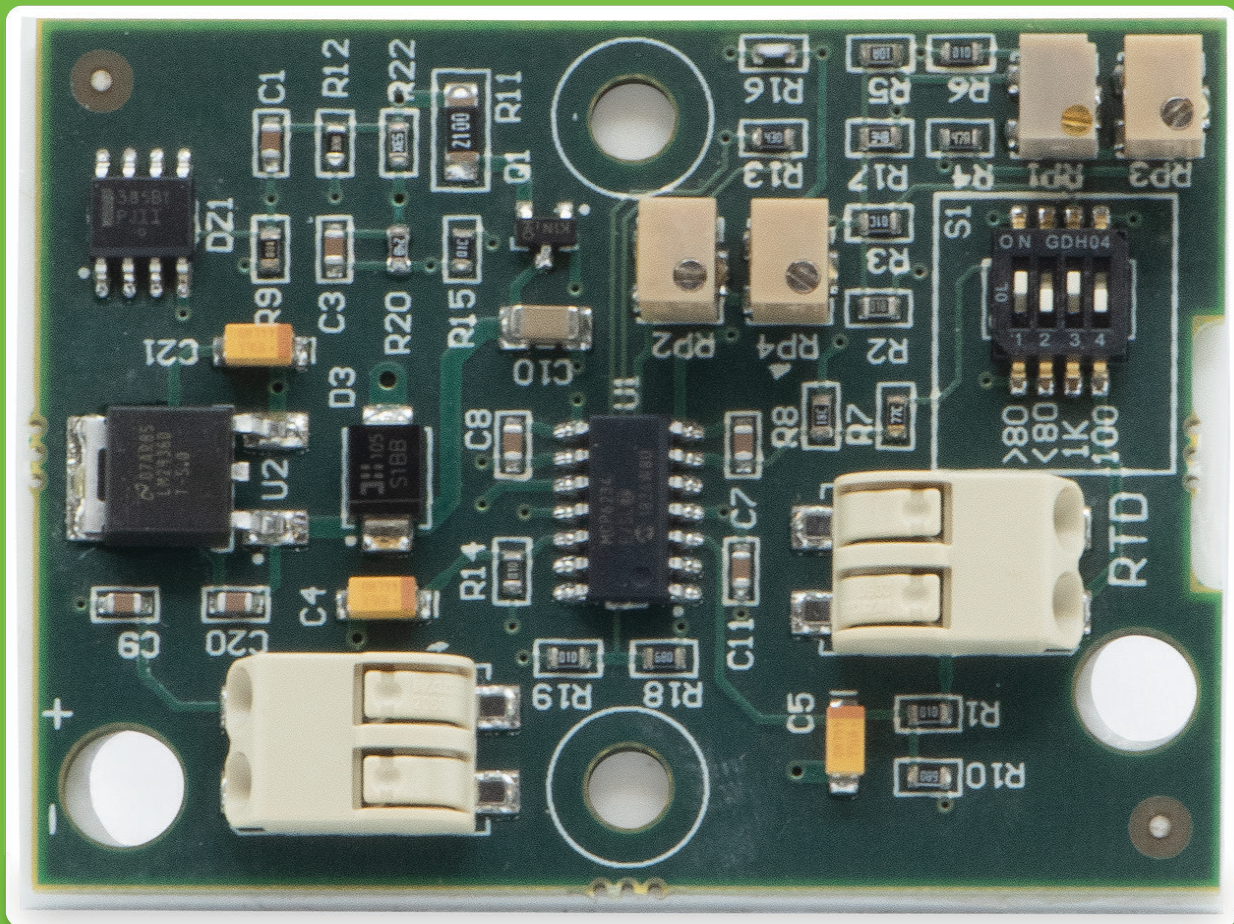


Temperature Transmitter TX Series



Description

The TX Series are temperature transmitters designed to provide a 4 to 20 mA signal proportional and linear to the sensed temperature.

The TX Series features:

- Temperature sensor input of either 100 or 1000 Ω platinum RTD
- A variety of factory calibrated ranges
- Able to be field calibrated with a minimum span of 25°F and a maximum span of 400°F - starting point no lower than -50°F and no higher than +375°.
- Two or three-wire sensor input
- Two-wire 4 to 20 mA linear output
- Loop-powered
- Superior level of radio frequency and electromagnetic interference rejection
- Optimum flexibility and reliability

Specifications

General

Accuracy: +/- 0.1% of span @ 32°F (0°C) transmitter only

Input sensor: 100 or 1000 Ω platinum RTD with temperature coefficient of 0.00385 $\Omega/\Omega/^{\circ}\text{C}$, jumper selectable

Input: 2- or 3-wire

Zero and span adjustment: Non-interacting

Environmental

Operating temperature: 32 to 158°F (0 to 70°C)

Operating humidity: 0 to 100% RH, non-condensing

Storage temperature: 14 to 176°F (-10 to 80°C)

Electrical

Supply voltage: 8 to 35 VDC

Input voltage effect: +/- 0.001% of span/volt

Output: 4 to 20 mA DC, 2-wire

Maximum over-current: 25 mA

Radio frequency interference effect: +/-0.5% FSO @ 27 MHz

Electromagnetic interference effect: +/-0.1% FSO

Polarity protection: Diode protected

Specifications subject to change without notice.

Ordering Information

Part No.	Descriptions
TX1500	40 to 90°F span, transmitter only
TX1501	-40 to 160°F span, transmitter only
TX1502	0 to 100°F span, transmitter only
TX1504	40 to 240°F span, transmitter only
TX1505	0 to 150°F span, transmitter only
TX1507	-30 to 130°F span, transmitter only

Custom ranges are available for special applications.

TX Series Accessories

QE50	RTD simulator, 100 Ω platinum IEC 751
QE51	RTD simulator, 1000 Ω platinum IEC 751

TS Series Platinum temperature sensors

Dimensions and Connections

Units in inches (mm)

