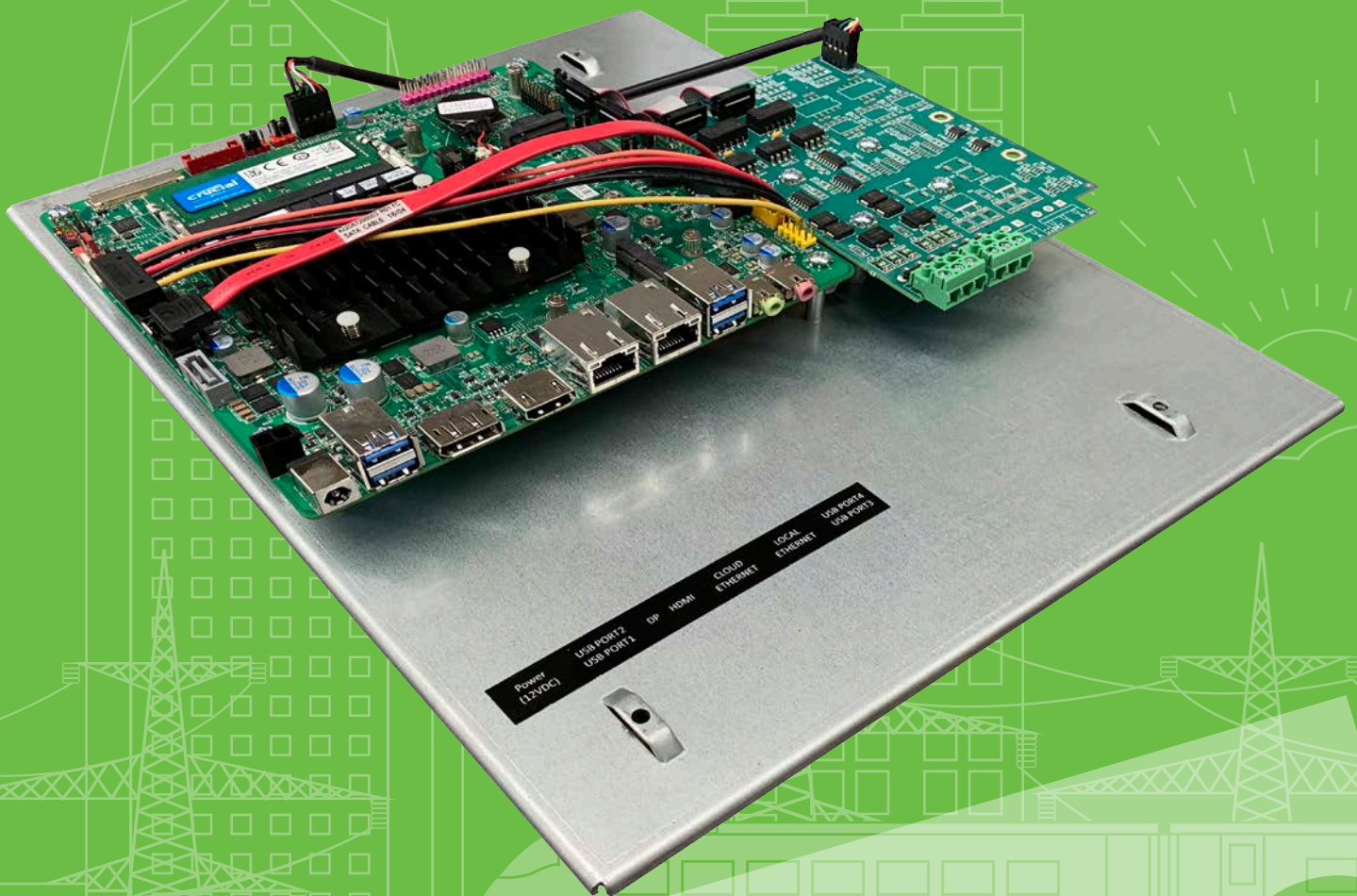


Panel Gateway Replacement

QWL 4.0



TCS

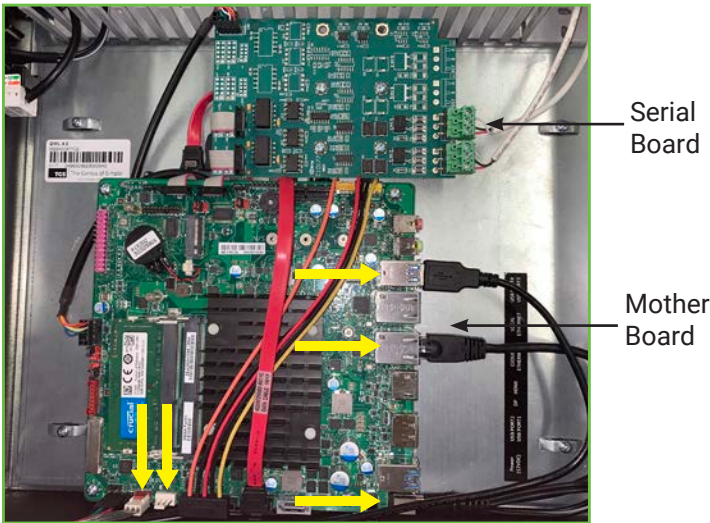
Installation

These instructions detail the installation of a new Panel Gateway QWL 4.0 into the QWL 4.0 Building Manager.

Disconnect external power from the QWL Building Manager before beginning replacement of the panel.

Removal of Old Panel Gateway Device from QWL 4.0 Building Manager

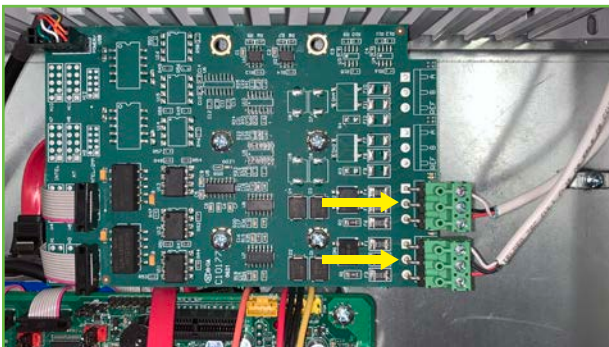
1. Remove five connections from the Mother Board: Power (12VDC), Cloud Ethernet, USB Port 1, fan and power/reset wire connection.
3. Remove the four screws in the metal plate that hold the Panel Gateway device onto the QWL Building Manager. Once the last screw is removed, carefully remove the old Panel Gateway assembly from the QWL Building Manager. Save the screws as they will be needed later.



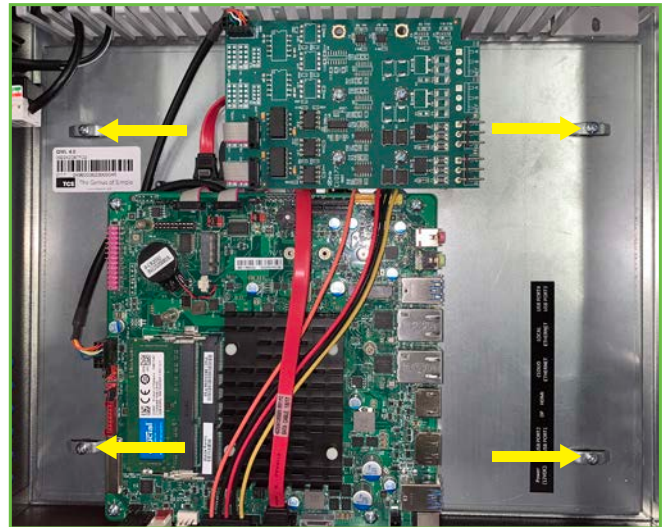
Cables to disconnect

NOTE: If your RS-485 COM bus is not connected to the Serial Board, you may skip step 2.

2. Do one of the following:
 - Pull off the green terminal plug(s) that connect the RS-485 COM bus to the connector on the serial board and move the wires out of the way. Note the orientation and location so the terminal plug(s) can be reconnected on the new board in the same orientation.
 - Disconnect the RS-485 wiring from the terminal plugs and move the wires out of the way. Note which COM port was being used so you reconnect the RS-485 wiring to the same port on the replacement board.



Location of the terminal plugs for the COM bus

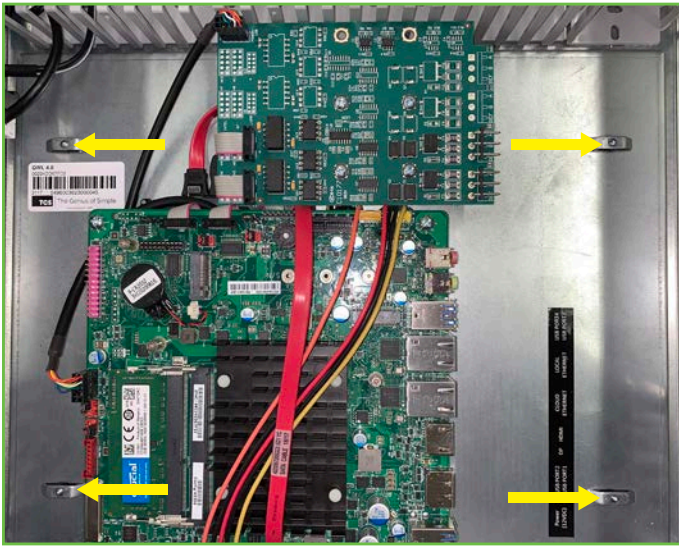


Remove the four screws

Installation of Panel Gateway Replacement

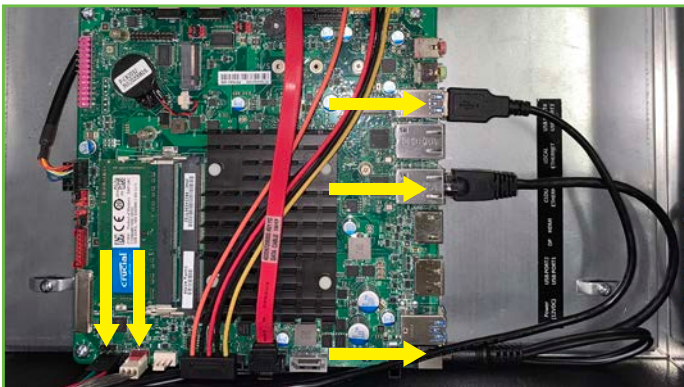
The installation of the replacement Panel Gateway is mostly the reverse of the removal of the old device:

1. Move or hold the wiring and cables out of the way and install the new Panel Gateway QWL 4.0 into the QWL Building Manager. With the Panel Gateway QWL 4.0 seated correctly, all four screw locations will line up with the holes in the metal plate. Use the screws that you set aside earlier to fasten the new Panel Gateway to the QWL Building Manager.

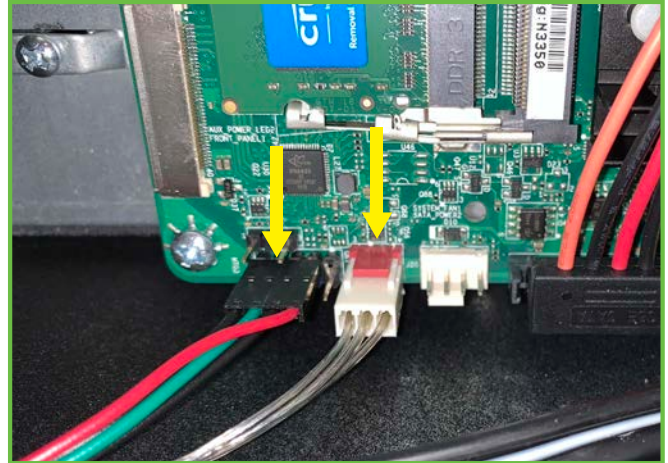


Install the four screws

2. Reattach the five connections to the Mother Board - Power (12VDC), USB Port 1, Cloud Ethernet, fan, and LED power/reset wire connections.



Connection locations on Mother Board



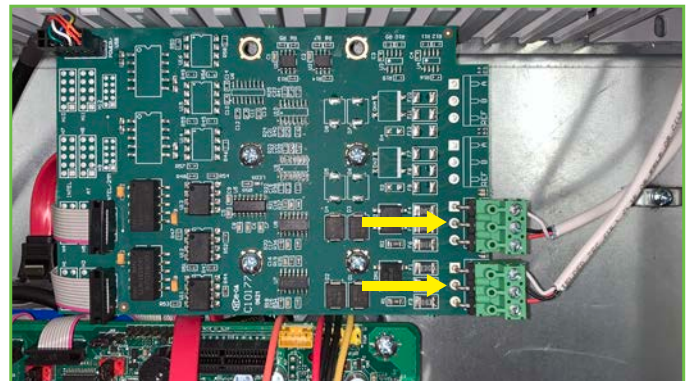
Closeup of Mother Board LED power/reset and fan connections



Closeup of Mother Board Power, USB, and Cloud Ethernet connections

3. Reattach any connections for the COM bus to the Serial Board in the same orientation that they were when removed from the old Panel Gateway.

NOTE: The new Panel Gateway comes with fresh terminal plugs. You can use the fresh plugs or re-use the existing plugs from your original connections if they are still in good condition.



Location on Serial Board to reconnect the COM bus

Installation

4. Remove and recycle/discard the old 12VDC power supply and replace it with the fresh 12VDC power supply that came with the new Panel Gateway. **Do not reuse the old power supply.**



Replacement power supply

5. Plug the new 12VDC power supply into an outlet and the power receptacle on the side two-port wall plate to power on the QWL 4.0 Building Manager.

6. Attach the included label, Panel Gateway QWL 4.0, to the outside of the QWL 4.0 Building Manager on the top of the side two-port wall plate as shown.



Placement of Panel Gateway QWL 4.0 label