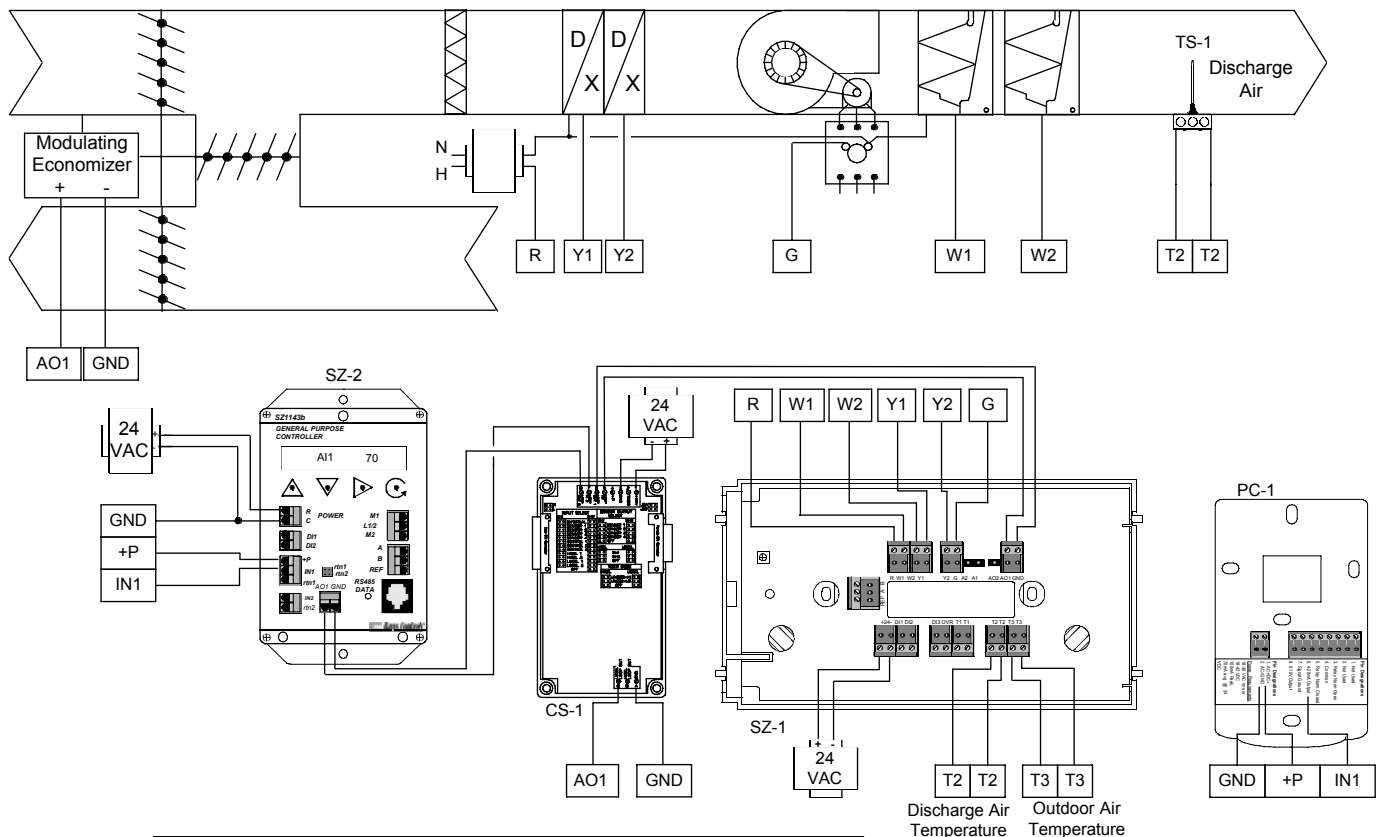


Sequence of Operation

Equipment occupied mode-based on time of day. Controller SZ-1 will cycle equipment to maintain an adjustable setpoint. If there is a call to economize, controller SZ-1 shall output a signal to CS-1. If there is a call to modulate damper because of high CO₂ levels, controller SZ-2 will output a signal to CS-1. The CS-1 will pass the highest signal to the damper motor.

Modulating Economizer with Temperature and Carbon Dioxide Control



equipment schedule			
Item	Quantity	Mod. Number	Description
SZ-1	1	SZ1041	Temperature Controller
SZ-2	1	SZ1143b	CO ₂ Controller
CS-1	1	CS1404	High Signal Select
TS-1	1	TS1002	D.A. Sensor
TS-2	1	TS1003	O.A. Sensor
PC-1	1	PC1001	CO ₂ Sensor

