

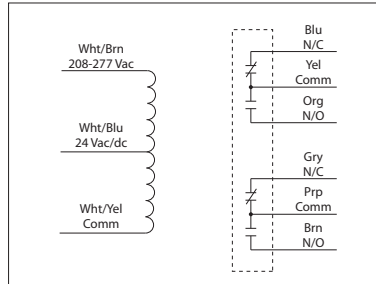
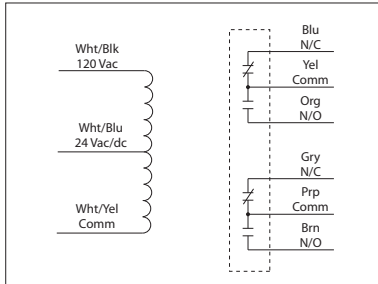
**10 AMP PILOT CONTROL RELAYS**

**RIB2401D**

Enclosed Relay 10 Amp DPDT with 24 Vac/dc/120 Vac Coil

**RIB2402D**

Enclosed Relay 10 Amp DPDT with 24 Vac/dc/208-277 Vac Coil



**RIB2401D-RD**  
**RIB2402D-RD**  
• Red housing



**RIB2401D-N4**  
**RIB2402D-N4**  
• NEMA 4X housing, UL508 only

RELAYS

**SPECIFICATIONS**

**# Relays & Contact Type:** One (1) DPDT Continuous Duty Coil  
**Expected Relay Life:** 10 million cycles minimum mechanical  
**Operating Temperature:** -30 to 140° F  
**Humidity Range:** 5 to 95% (noncondensing)  
**Operate Time:** 8ms  
**Relay Status:** LED On = Activated  
**Dimensions:** 1.70" x 2.80" x 1.50" with .50" NPT nipple  
**Wires:** 16", 600V Rated  
**Approvals:** UL Listed, UL916, UL864, C-UL California State Fire Marshal, CE, RoHS  
**Housing Rating:** UL Accepted for Use in Plenum, NEMA 1  
**Gold Flash:** No  
**Override Switch:** No

**Contact Ratings:**  
 10 Amp Resistive @ 30 Vdc  
 10 Amp General Use @ 277 Vac  
 1/2 HP @ 120/240 Vac (N/O)  
 1/3 HP @ 120/240 Vac (N/C)  
**B300 Pilot Duty**  
 120 Vac 30A Make 3A Break (360 VA)  
 240 Vac 15 A Make 1.5A Break (360 VA)  
 208 Vac 17.3A Make 1.73A Break (360 VA)  
 277 Vac 13A Make 1.3A Break (360 VA)  
 24 Vac 30A Make 5A Break (120VA) 5A Max

**Coil Current:**  
 24 mA @ 18 Vac      20 mA @ 20 Vdc  
 32 mA @ 24 Vac      24 mA @ 24 Vdc  
 40 mA @ 30 Vac      36 mA @ 30 Vdc  
 31 mA @ 120 Vac (RIB2401D)  
 36 mA @ 208-277 Vac (RIB2402D)

**Coil Voltage Input:**  
 24 Vac/dc ; 120 Vac ; 50-60 Hz (RIB2401D)  
 24 Vac/dc ; 208-277 Vac ; 50-60 Hz (RIB2402D)  
 Drop Out = 3 Vac / 3.8 Vdc  
 Pull In = 18 Vac / 20 Vdc