



# AirLink LS300

## User Guide



**SIERRA**  
WIRELESS™

4112895  
Rev 4



## Important Notice

Due to the nature of wireless communications, transmission and reception of data can never be guaranteed. Data may be delayed, corrupted (i.e., have errors) or be totally lost. Although significant delays or losses of data are rare when wireless devices such as the Sierra Wireless modem are used in a normal manner with a well-constructed network, the Sierra Wireless modem should not be used in situations where failure to transmit or receive data could result in damage of any kind to the user or any other party, including but not limited to personal injury, death, or loss of property. Sierra Wireless accepts no responsibility for damages of any kind resulting from delays or errors in data transmitted or received using the Sierra Wireless modem, or for failure of the Sierra Wireless modem to transmit or receive such data.

## Safety and Hazards

Do not operate the Sierra Wireless modem in areas where blasting is in progress, where explosive atmospheres may be present, near medical equipment, near life support equipment, or any equipment which may be susceptible to any form of radio interference. In such areas, the Sierra Wireless modem **MUST BE POWERED OFF**. The Sierra Wireless modem can transmit signals that could interfere with this equipment.

The driver or operator of any vehicle should not operate the Sierra Wireless modem while in control of a vehicle. Doing so will detract from the driver or operator's control and operation of that vehicle. In some states and provinces, operating such communications devices while in control of a vehicle is an offence.

## Limitation of Liability

The information in this manual is subject to change without notice and does not represent a commitment on the part of Sierra Wireless. SIERRA WIRELESS AND ITS AFFILIATES SPECIFICALLY DISCLAIM LIABILITY FOR ANY AND ALL DIRECT, INDIRECT, SPECIAL, GENERAL, INCIDENTAL, CONSEQUENTIAL, PUNITIVE OR EXEMPLARY DAMAGES INCLUDING, BUT NOT LIMITED TO, LOSS OF PROFITS OR REVENUE OR ANTICIPATED PROFITS OR REVENUE ARISING OUT OF THE USE OR INABILITY TO USE ANY SIERRA WIRELESS PRODUCT, EVEN IF SIERRA WIRELESS AND/OR ITS AFFILIATES HAS BEEN ADVISED OF THE POSSIBILITY OF SUCH DAMAGES OR THEY ARE FORESEEABLE OR FOR CLAIMS BY ANY THIRD PARTY.

Notwithstanding the foregoing, in no event shall Sierra Wireless and/or its affiliates aggregate liability arising under or in connection with the Sierra Wireless product, regardless of the number of events, occurrences, or claims giving rise to liability, be in excess of the price paid by the purchaser for the Sierra Wireless product.

## Patents

This product may contain technology developed by or for Sierra Wireless Inc. This product includes technology licensed from QUALCOMM®. This product is manufactured or sold by Sierra Wireless Inc. or its affiliates under one or more patents licensed from InterDigital Group and MMP Portfolio Licensing.

## Copyright

© 2013 Sierra Wireless. All rights reserved.

## Trademarks

Sierra Wireless®, AirPrime®, AirLink®, AirVantage® and the Sierra Wireless logo are registered trademarks of Sierra Wireless.

Watcher® is a registered trademark of Netgear, Inc., used under license.

Windows® and Windows Vista® are registered trademarks of Microsoft Corporation.

Macintosh® and Mac OS X® are registered trademarks of Apple Inc., registered in the U.S. and other countries.

QUALCOMM® is a registered trademark of QUALCOMM Incorporated. Used under license.

Other trademarks are the property of their respective owners.

## Contact Information

### International Contact Information

AirLink Sales	<a href="mailto:airlinksales@sierrawireless.com">airlinksales@sierrawireless.com</a>
AirLink Support*	<a href="mailto:support@sierrawireless.com">support@sierrawireless.com</a>
AirLink RMA Repairs*	<a href="mailto:repairs@sierrawireless.com">repairs@sierrawireless.com</a>
AirLink Online Support Knowledgebase	<a href="http://www.sierrawireless.com/Support/SupportCenter">www.sierrawireless.com/Support/SupportCenter</a>
AirLink Software Downloads	<a href="http://www.sierrawireless.com/Support/Downloads">www.sierrawireless.com/Support/Downloads</a>
Corporate Web Site	<a href="http://www.sierrawireless.com">www.sierrawireless.com</a>

\* If you have purchased your product from an AirLink Distributor or Reseller, please contact them for first line technical support.

## Sierra Wireless Headquarters Contact Information

Sales Headquarters:	Phone:	+1-604-232-1488
	Hours:	8:00 AM to 5:00 PM Pacific Time
Post:	Sierra Wireless 13811 Wireless Way Richmond, BC Canada V6V 3A4	

Consult our website for up-to-date product descriptions, documentation, application notes, firmware upgrades, troubleshooting tips, and press releases:

[www.sierrawireless.com](http://www.sierrawireless.com)



## Contents

<b>Introduction to the AirLink LS300</b> .....	<b>9</b>
Introduction. ....	9
Description .....	10
Front Panel .....	10
Left Side Panel .....	11
Rear Panel .....	12
ALEOS Software .....	12
ACEmanager .....	13
ACEview .....	13
AirVantage Management Service .....	14
 <b>Installation and Startup</b> .....	 <b>15</b>
Power Connector Description. ....	15
Installing the SIM Card. ....	19
Mounting Location Information. ....	19
Tools and Materials Required .....	20
Mounting Brackets .....	20
Flat Surface Mount .....	20
DIN Rail Mount .....	21
Connecting the LS300 .....	23
Starting the LS300 .....	24
LED Operation .....	25
 <b>Configuring the AirLink LS300</b> .....	 <b>27</b>
Connection Ports .....	27
Configuring with ACEmanager. ....	27
Configuring with AirVantage Management Service .....	28
Configuring with AT Commands. ....	28

<b>AirLink LS300 Specifications</b> .....	<b>31</b>
<b>Regulatory Information</b> .....	<b>35</b>
Federal Communications Commission Notice (FCC United States) . . . .	35
Notice for Canadian Users .....	35
RF Exposure .....	36
EU .....	36





# 1: Introduction to the AirLink LS300

2

This chapter describes the Sierra Wireless AirLink LS300 and its various connectors. It also introduces the ALEOS™ software and the AirVantage Management System (AVMS) which controls, configures and monitors the AirLink LS300.

## Introduction

The AirLink LS300 is a compact, intelligent and fully-featured communications platform that provides real-time wireless capabilities for fixed and mobile applications such as:

- Remote asset monitoring
- Smart meters
- AVL applications
- Public Safety vehicle deployments
- Point of sale terminals
- Digital signs

The AirLink LS300 has multiple communication ports including serial, Ethernet, and USB ports. The power connector has one digital I/O pin for remote monitoring and control and one ignition sense pin to turn the device on and off and trigger the low power mode.

The AirLink LS300 is a 3G cellular device that supports a variety of radio bands options, both on HSPA+ or CDMA EV-DO cellular technology.

The AirLink LS300, when coupled with the rich embedded intelligence provided by the embedded ALEOS software, is the perfect choice for a broad set of machine to machine solutions.

## Description

### Front Panel

The front panel has the following connectors and controls:

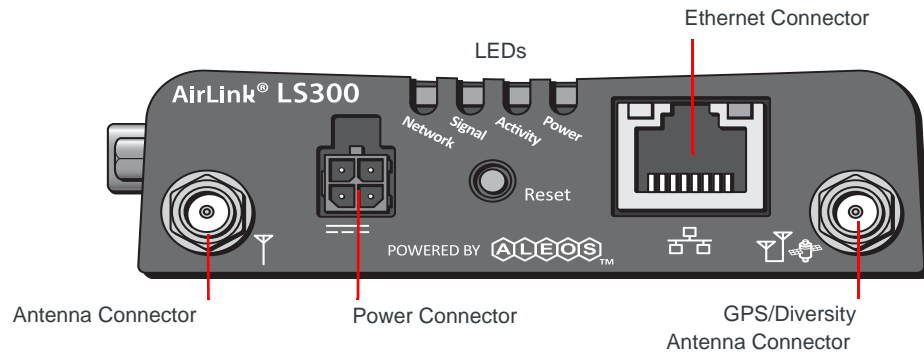


Figure 1-1: Front Panel

- **Antenna Connector**—This is the radio's receive and transmit port. The device works with most cellular antennas with an SMA connector.  
The antenna should not exceed the maximum gain specified in [Antenna Considerations](#) on page 35. In more complex installations (such as those requiring long lengths of cable and/or multiple connections), you must follow the maximum dBi gain guidelines specified by the radio communications regulations of the Federal Communications Commission (FCC) or Industry Canada or your country's regulatory body (if used outside the US)
- **LEDs**—These show the device's operating status. Each LED can be red, green, yellow or off. The LEDs are described in detail in [LED Operation](#) on page 25. They are:
  - **Network**—When green the device is connected to a cellular network with an IP address assigned and a channel acquired.
  - **Signal**—When green it is receiving a cellular signal.
  - **Activity**—When green, the radio link is active.
  - **Power**—When green, the device is connected to power.
- **Ethernet Connector**—This RJ-45 connector connects a standard Ethernet cable to the device. This is used to connect a PC to the device for configuration and diagnostic purposes or attaching Ethernet equipment to the device.
- **GPS/Diversity Antenna Connector**—This connects an optional GPS antenna to the device. It works with most antennas that have an SMA connector. It also can be used as an auxiliary receive port for wireless communications.

---

*Note: This port is receive only, it does not transmit.*

---

- **Reset**—Press and release this button to reboot the device.

---

*Note:* To reset the device to the factory default setting, press and hold the Reset button until all the LEDs start flashing yellow. (This may take more than 1 minute.)

---



---

*Note:* **Power Connector**—This connects power to the device and provides additional inputs/outputs for the control and monitoring of external devices as well as triggering the low power mode. More information on its operation and how to use it is given in [Power Connector Description](#) on page 15.

---

There are two types of optional power cables available from Sierra Wireless:

- Cables with an AC adapter that are usually used for indoor, fixed applications where the device runs off line power.
- DC cables that are usually used in vehicles or other installations where the device runs off battery power.

The device automatically starts when it senses power as described in [Starting the LS300](#) on page 24.

## Left Side Panel

The left side panel has the following connectors:

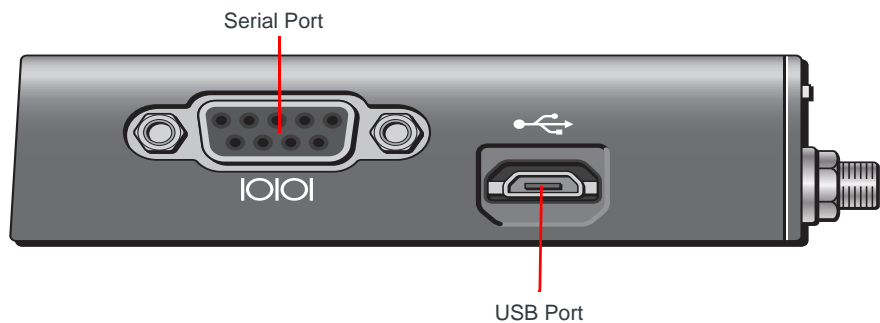


Figure 1-2: Left Side Panel

- **Serial Port**—This 9-pin connector provides standard RS-232 communication with a standard straight-through serial cable. It is used to communicate with industrial machines like motors, computers or controllers or for connection to a computer to configure the device with AT commands. It also supports features like TCP PAD and UDP PAD.
- **USB Port**—This port is a Micro-B connector. You can connect a Windows PC to this port to monitor and configure the device.

When connected to a PC, it becomes either a:

- Virtual serial port
- Virtual Ethernet port

---

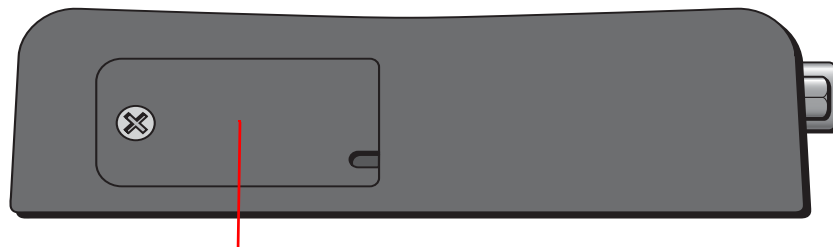
*Note:* By default it is a virtual Ethernet port.

---

Windows drivers for this port are available at the Sierra Wireless's download web site [www.sierrawireless.com/en/Support/Downloads.aspx](http://www.sierrawireless.com/en/Support/Downloads.aspx).

## Rear Panel

The rear panel has the following connector:



SIM Card Port

Figure 1-3: Rear Panel

- **SIM Card Port**—This panel allows access to the SIM card connector for card installation and removal, if your mobile network operator requires a SIM card. Also see [Installing the SIM Card](#) on page 19.

## ALEOS Software

---

*Note: For detailed information on all of the features in ALEOS, see the ALEOS Configuration User Guide.*

---

ALEOS, the embedded core technology of the AirLink product line provides:

- Simplified installation, operation and maintenance of any wireless solution.
- An always-on, always-aware, intelligent two-way connection for mission-critical applications.

ALEOS enables:

- Persistent Network Connectivity
- Over-The-Air (OTA) Upgrades
- Wireless Optimized TCP/IP
- Real-Time Notification
- Real-Time GPS Reporting
- GPS Store and Forward
- Packet Level Diagnostics
- Device Management and Control

The AirLink Control Environment (ACE) and ACEWare are Sierra Wireless' device management and monitoring tool suites for AirLink devices. The ACEware suite includes:

- **ACEmanager**—a software application embedded in the device
- **ACEview**—a Windows-based application for PCs
- **AirVantage Management Service (AVMS)**—a cloud computing device management service provided by Sierra Wireless

Contact your dealer or Sierra Wireless representative for more information.

Download the applications and user guides from the Sierra Wireless AirLink Solutions web site at [www.sierrawireless.com/support](http://www.sierrawireless.com/support).

## ACEmanager

ACEmanager:

- Simplifies deployment
- Provides extensive monitoring, control and management capabilities
- Configures your device to meet your needs
- Monitors and controls your AirLink device remotely and in real-time
- Is accessible through a web browser connected to the device

See [Starting the LS300](#) on page 24 for instructions on how to access ACEmanager.

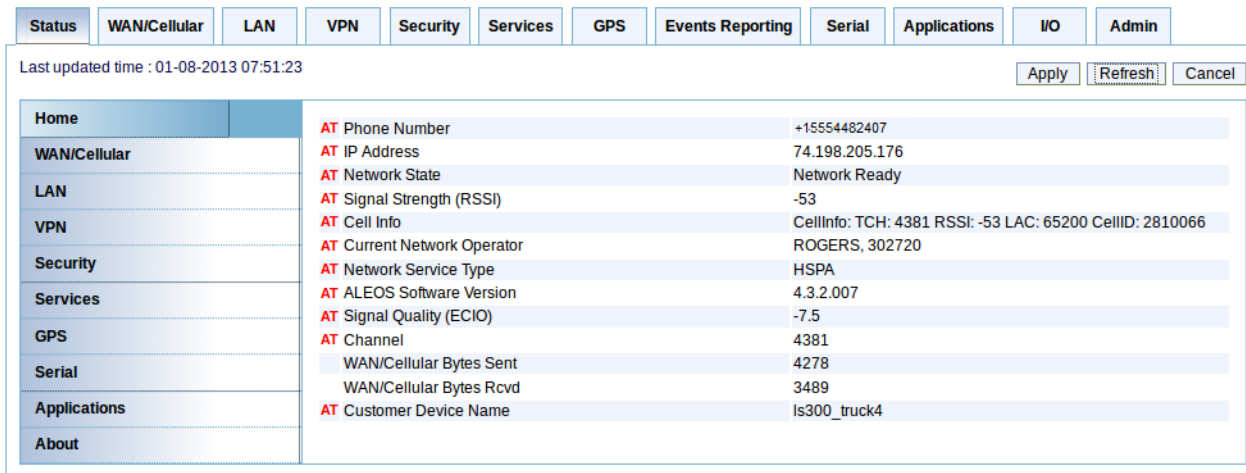


Figure 1-4: ACEmanager Home Page

## ACEview

ACEview is a Windows-based monitoring application for the PC with an easy to read interface.

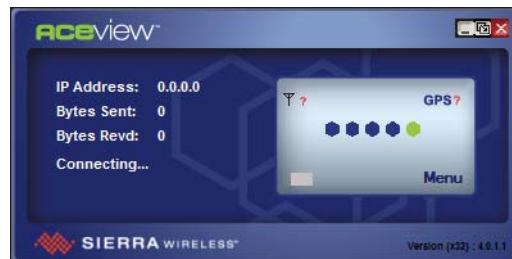


Figure 1-5: ACEview Screen

*Note: ACEview requires the Microsoft .NET Framework v2.0 and Microsoft Windows XP or later. Obtain the Microsoft .NET Framework from Microsoft at: <http://www.microsoft.com>.*

## AirVantage Management Service

AirLink devices can be managed with the AirVantage Management Service (AVMS) available from Sierra Wireless. AVMS is a cloud-based application, accessed from your web browser, that provides remote monitoring and configuration for any number of your AirLink ALEOS devices.

AVMS features include:

- Device management with no software or hardware to buy and no ongoing maintenance required.
- Advanced monitoring dashboards and alert notifications ensuring you always know the status of your AirLink devices.
- Detailed configuration of all ALEOS parameters, including templates providing batch updates of pre-set configurations across multiple devices.
- Over-the-air (OTA) firmware upgrades for all of your AirLink devices with a single operation.

To use AVMS, either call your AirLink reseller or visit:

[www.sierrawireless.com/en/productsandservices/AirLink/Device\\_Management.aspx](http://www.sierrawireless.com/en/productsandservices/AirLink/Device_Management.aspx)

## 2: Installation and Startup

This chapter shows you how to connect, install and start the Sierra Wireless AirLink LS300. It also describes the front panel LEDs.

### Power Connector Description

The LS300's power connector has four pins:

- Two pins connecting DC voltage to the device
- Two pins providing additional monitoring and control functions

This section has information to help you plan your device's connection and configuration.

The connector's pin diagram (Figure 2-1) shows the colors of the wires used on the DC power cable you can order from Sierra Wireless.

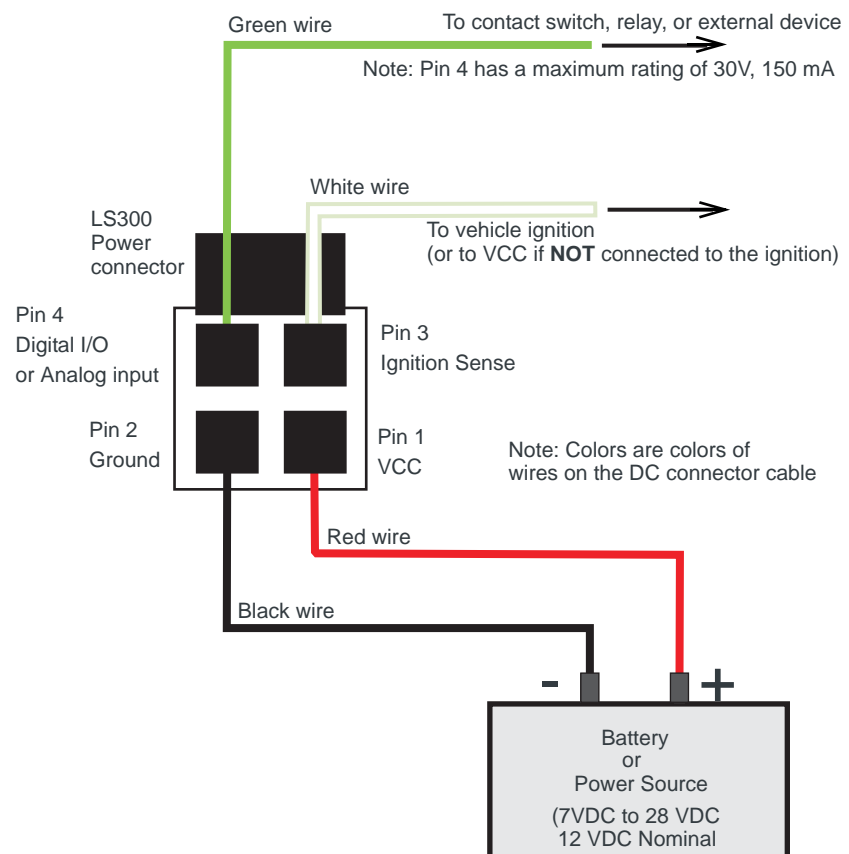


Figure 2-1: LS300 Power Connector Pin Diagram

## Pins 1 and 2

- **Pin 1**—VCC; Connect to +12VDC (nominal) (red wire on DC cable).
- **Pin 2**—Ground; Connect to ground (black wire on DC cable).

## Pin 3

This pin is the ignition sense pin (white wire on DC cable). The voltage level present on this pin turns the device on and off.

---

*Note: If you do not connect this pin to the ignition, you **MUST** connect it to the positive terminal of your power supply or battery. The device looks for a qualified voltage on this pin as part of the power up sequence (7–28 VDC). If it doesn't see it, the device will not turn on. If you are using a Sierra Wireless AC cable, the connection is inside the cable.*

---

There are several typical connection options for this pin:

***Option 1—If you want the device turned on and off when the engine is turned on and off:***

- Connect pin 3 to the ignition.
- In ALEOS, disable the Low Power Mode. (Default setting is disabled.)

***Option 2—If you power the device from the engine's battery and you do not want the device to drain it when the engine is turned off:***

- Connect pin 3 to the ignition.
- In ALEOS, enable the Low Power Mode and set a time delay.

When the ignition is turned off, the device operates at full power for the programmed time delay. When it expires, the device switches to Low Power Mode (consumes 35mA or less). The device resumes normal operation when the ignition is turned on.

***Option 3—If you want the device to switch into low power mode when the engine battery voltage drops below a certain value:***

- Connect pin 3 to pin 1.
- In ALEOS, configure the Low Power Mode with a voltage level threshold.

The device operates normally until the battery voltage drops below the threshold value, triggering the Low Power Mode. The device resumes normal operation when the battery voltage rises above the threshold value.

***Option 4—If you use a separate battery other than the engine's for device power, (such as in an ambulance or other application that has a stand-alone battery power system) but it isn't connected to an ignition or an on/off switch, and you do not want the battery drained:***

- Connect pin 3 to pin 1.
- In ALEOS, configure the Low Power Mode with a voltage level threshold.

The device operates normally until the battery voltage drops below the threshold value, triggering the Low Power Mode. The device resumes normal operation when the battery voltage rises above the threshold value.

***Option 5—If you have an installation where the device uses line power such as in a store or a remote site where power saving isn't needed:***

- Use the Sierra Wireless AC adapter or connect pin 3 to pin 1.



- In ALEOS, disable the Low Power Mode. (Default setting is disabled.)  
The device is on for as long as the power is on.

---

*Note: For details on how to use ALEOS, see the ALEOS Configuration User Guide.*

---

## Pin 4

This pin is a digital input/output or an analog voltage input (green wire on DC cable).

Pin 4:

- Monitors inputs and outputs
- Drives a relay

It has a maximum rating of 30V and 150mA sink current. The pin is user programmed. For configuration instructions and other information on how to use it, refer to the ALEOS Configuration User Guide.

One way to use pin 4 is with events reporting. In ALEOS you:

1. Create an **Event**. This triggers the device to act when it sees a specific input. For example, you can tell the device to do something when the pin (called digital input 1 in ALEOS) sees a digital 1. This could be when a door is opened, activating a switch attached to it.
2. Specify an **Action**. These are instructions the device performs when it sees an event. For example, an email could be sent to security, saying the door is open, giving the time, location and other information.

There are several typical uses for Pin 4:

- As a **digital input** it monitors a switch, using its opening or closing to record events or monitoring external voltages up to 30VDC. For example, you could use it to measure the voltage on a 24VDC light bulb and have the device react when it turns on.

When the switch, or input voltage is:

- **Open (or at 3.3VDC to 30VDC)** – It is read as a digital input=1.
- **Closed (or lower than 3.3VDC)** – it is read as a digital input=0.

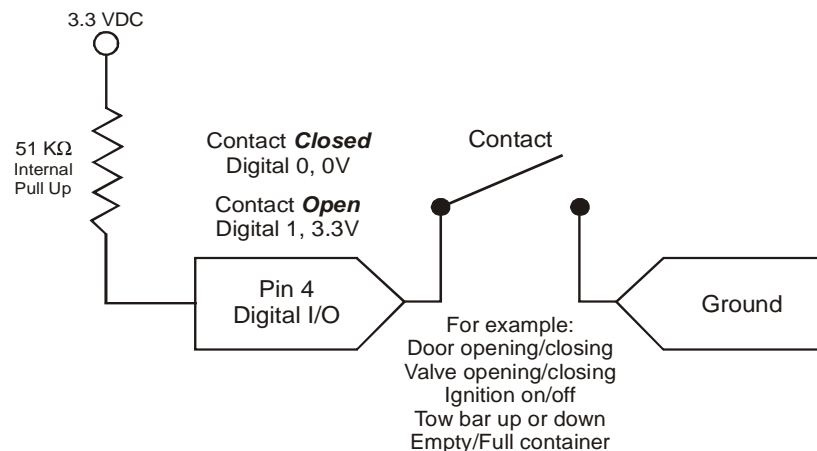


Figure 2-2: Digital Input Operation

- As a **digital output**, it can trigger an alarm, siren, door lock or opens a valve or a switch. Pin 4 is an open collector transistor output normally at 3.3VDC. When triggered, it is pulled to ground. The initial state of the digital output when the device is rebooted is configurable in ALEOS.

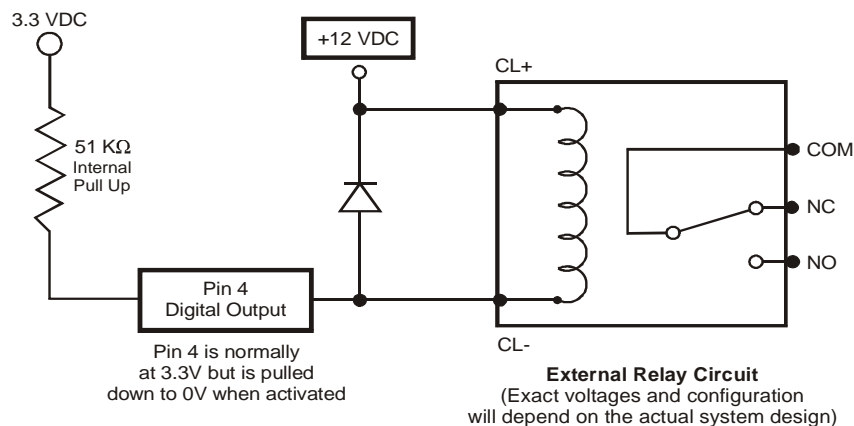


Figure 2-3: Digital Output Operation

- As an **analog voltage input**, it detects inputs of 0–30VDC across this pin to ground. When used with a converter to transform values into voltages, it monitors measurements like temperatures, pressures or the volume of liquid in a container. ALEOS can transform these voltages into meaningful values. In ALEOS, events reporting tells the device to perform an action when a specified voltage is detected.

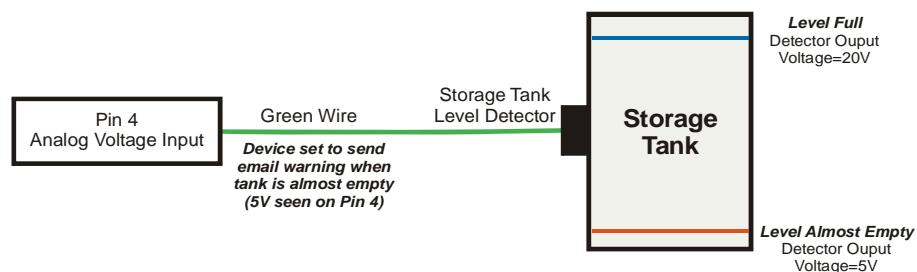


Figure 2-4: Analog Voltage Input Operation

## Installing the SIM Card

If your mobile network operator requires it, insert a SIM card into the device before installation or connecting any external equipment or power to the device.

To install the SIM card:

1. Remove the SIM card cover.

When viewed from the top, the notched corner of the SIM card faces towards the center of the device as shown in [Figure 2-5](#).

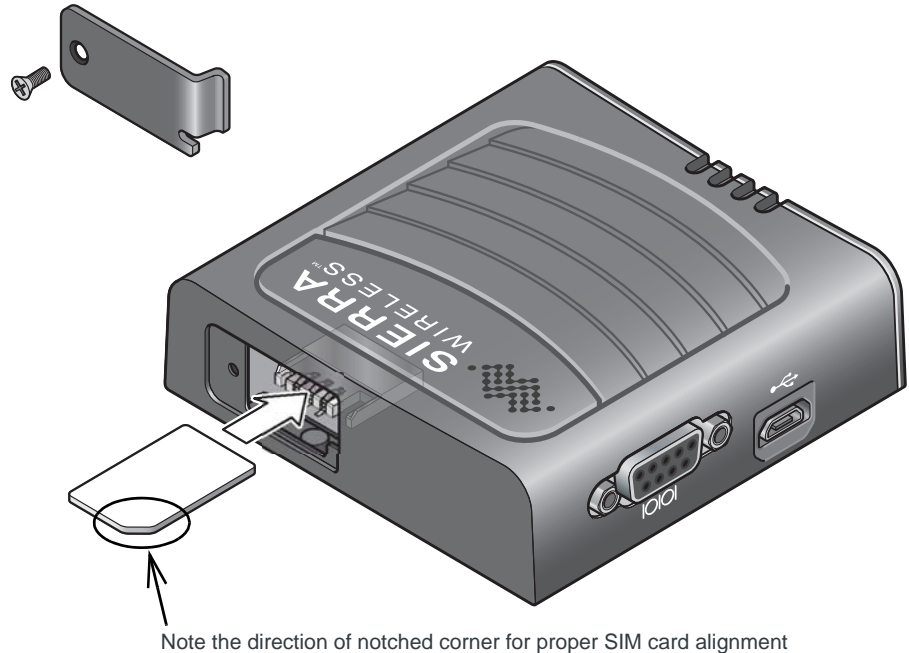


Figure 2-5: SIM Card Installation

2. Gently slide the card into the slot in the connector until it stops.
3. Replace the SIM card cover.

## Mounting Location Information

**Warning:** This device is not intended for use close to the human body. Antennas should be at least 8 inches (20 cm) away from the operator.

Mount the device where:

- There is easy access to the cables
- Cables are not bent, constricted, close to high amperages or exposed to extreme temperatures
- The front panel LEDs are easily visible
- There is adequate airflow

- It is away from direct exposure to the elements, such as sun, rain, dust, etc. If you are installing it in a vehicle, the best locations are in places such as a car trunk or in a container behind the seats.
- It will not be hit or come into contact with people, cargo, tools, equipment, etc.

## Tools and Materials Required

- If needed, a SIM card for your device as provided by your mobile network operator
- #0 Phillips screwdriver if you have to install the SIM card
- Laptop computer with Ethernet cable
- Wireless antenna
- Optional—a GPS antenna or a second wireless antenna
- Power cable, either the DC cable or AC cable ordered from Sierra Wireless or your own custom-made cable
- Optional—a straight-through 9-pin connection cable for the RS-232 port
- Optional—mounting bracket kit, available from Sierra Wireless

---

**Caution:** *The device has a hardened case for use in industrial and extreme environments. If you are installing it in these types of environments, use cables designed and specified for use in these types of environment to avoid cable failure.*

---

## Mounting Brackets

Sierra Wireless has two mounting bracket kits.

- Mounting Bracket —Screw in for LS300 (P/N 60000571) for use on flat surfaces, including walls, counters, or inside vehicles
- DIN Rail Mounting Bracket for LS300 (P/N 6000558)

## Flat Surface Mount

If you are mounting the LS300 on a flat surface, order mounting bracket kit P/N 60000571 (Mounting Bracket —Screw in for LS300) from Sierra Wireless. The kit contains:

- Bracket – Qty 1
- Screw M3 – Qty 4
- Screw M4 – Qty 4

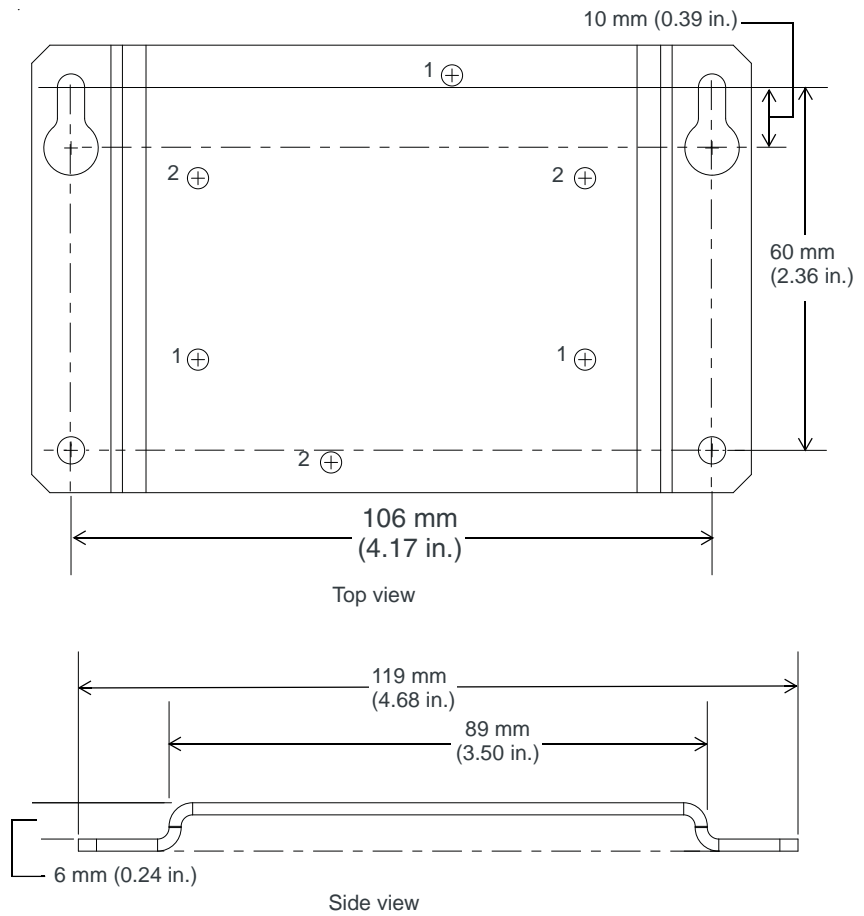


Figure 2-6: LS300 Mounting Bracket for flat surfaces

To mount the LS300 on a flat surface using the mounting bracket:

1. Line up the LS300 with either set 1 or set 2 holes, depending on the desired orientation. (See [Figure 2-6](#).)
2. Attach the LS300 to the bracket with the three mounting screws.
3. Attach the bracket/LS300 combination to the mounting surface.
4. Connect the bracket to ground (the battery or power source negative terminal) by connecting a grounding strap under one of the mounting bracket screws. This provides protection from electrostatic discharges.

## DIN Rail Mount

If you are mounting the LS300 on a DIN rail, order mounting bracket kit P/N 6000558 (DIN Rail Mounting Bracket for LS300) from Sierra Wireless. The kit contains:

- L-shaped DIN Rail Mounting Bracket—Qty 1
- DIN Rail Clip (35 mm EN 50022)—Qty 1
- Screw M3—Qty 4

- Screw M4—Qty 4

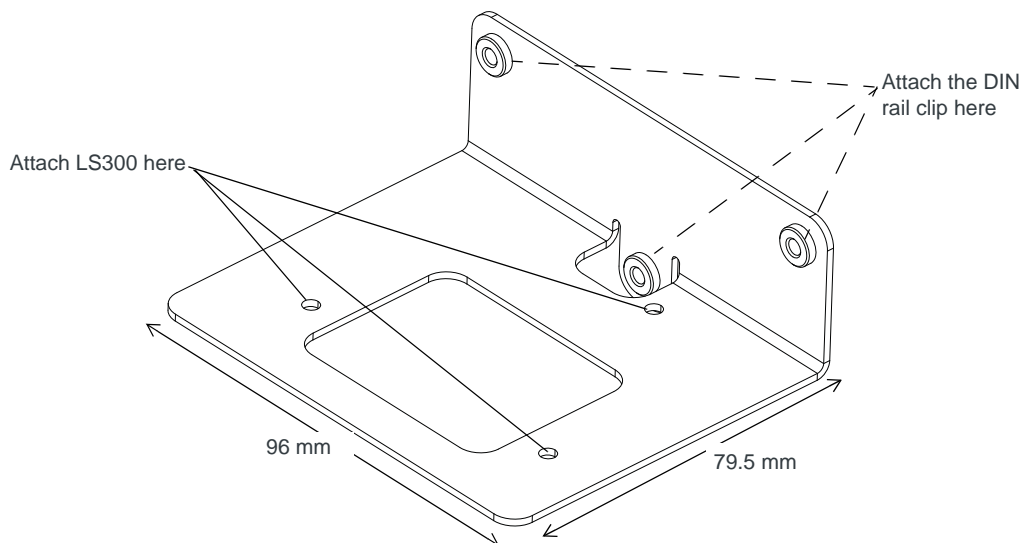


Figure 2-7: DIN Rail Mounting Bracket

To attach the LS300 to a horizontally mounted DIN rail:

1. Install the SIM card. (See [Installing the SIM Card](#) on page 19.)
2. Test the network connectivity.

It is important to first ensure network connectivity because once the device is attached to the L-shaped DIN rail mounting bracket, access to the SIM card is restricted.

- a. Connect the LS300. Power it up and ensure that you have network connectivity. (See [Connecting the LS300](#) on page 23 and [Connecting the LS300](#) on page 23.)
3. Place the LS300 on the DIN rail mounting bracket, lining up the mounting holes on the underside of the device with the holes on the DIN rail mounting bracket.
  4. Use the screws provided to attach the LS300 to the bracket.
  5. Use the screws provided to attach the DIN rail clip to the bracket.
  6. Attach the DIN rail clip to a horizontal DIN rail, with the spring clip at the bottom, taking into account the location information described in [Mounting Location Information](#) on page 19.

---

*Note: The DIN rail bracket and clip in the kit Sierra Wireless provide is not intended for use on DIN rail that is mounted vertically.*

---

## Installing the GPS Antenna

1. Mount the antenna where it has a good view of the sky. It should see at least 90° of the sky. For example, if you mounted the AirLink device in a vehicle, you could mount the GPS antenna on the roof, the dashboard, or the rear panel, as shown in [Figure 2-8](#) on page 23.

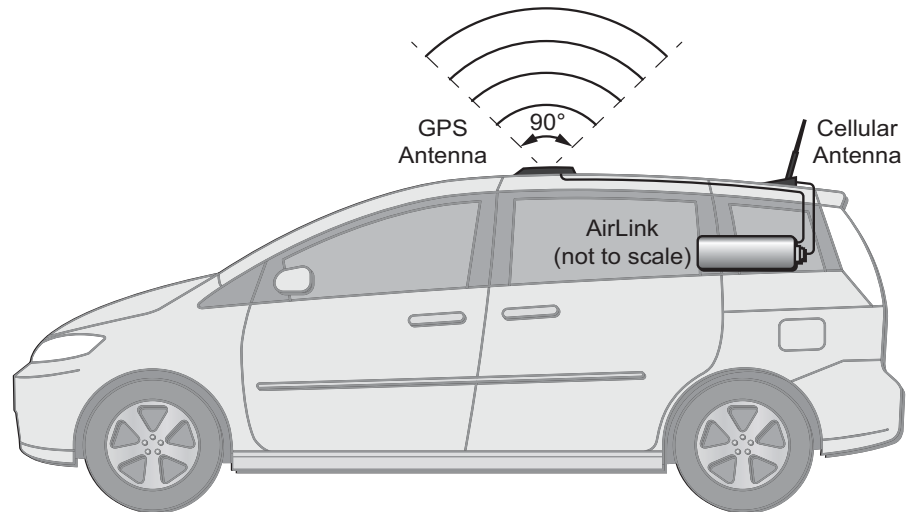


Figure 2-8: Mounting the antennas in a car or truck

2. Connect the antenna cable to the GPS/Diversity antenna connector.

## Connecting the LS300

*Note: If the antenna is located far away from the device, keep the cables as short as possible to prevent the loss of antenna gain. Route the cables so that they are protected from damage and will not be snagged or pulled on. There should be no binding or sharp corners in the cable routing. Excess cabling should be bundled and tied off. Make sure that the cables are secured so that their weight will not loosen the connector from the device over time.*

1. Connect the RF antenna to the antenna connector.
2. If used, connect either a GPS antenna or a diversity RF antenna to the GPS/Diversity antenna connector.
3. Attach a laptop to the device with the Ethernet cable.
4. If used, attach a device or computer to the RS-232 port.
5. Connect the power cable to the device, and if used, to the external devices to be controlled/monitored.

The device starts automatically, as indicated by the flashing LEDs.

*Note: For details about the power connector, see [Power Connector Description](#) on page 15. The battery connector cable should be no longer than 10 feet (3 meters).*

## Starting the LS300

Upon receiving power, the device automatically starts as shown by the flashing LEDs. If it does not turn on, see that the:

- Power connector is plugged in
- Power cable is connected to power (line or battery power)
- Power is turned on or that the battery is fully charged
- Ignition Sense (pin 3) is connected to the battery or power source (see [Power Connector Description](#) on page 15 for details)

After the initial power up, to see if the device is properly connected and operating correctly:

1. In the laptop connected to the device, open a web browser.
2. In the browser's address bar, enter the IP address:  
**http://192.168.13.31:9191.**

---

*Note: It takes the device 2 – 3 minutes to respond after power up.*

---

3. The ACEmanager login screen appears. Enter your user name and password. The administrator user name is **user** and password is **12345**.

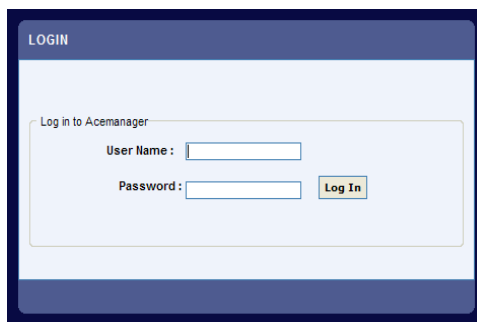


Figure 2-9: ACEmanager Login Screen

4. The ACEmanager homepage appears



*Note: The appearance of the homepage varies depending on the type of network the device is connected to. For more details and information on configuring the LS300, refer to the ALEOS Configuration User Guide.*

Status	WAN/Cellular	LAN	VPN	Security	Services	GPS	Events Reporting	Serial	Applications	I/O	Admin		
Last updated time : 01-08-2013 07:51:23											<input type="button" value="Apply"/>	<input type="button" value="Refresh"/>	<input type="button" value="Cancel"/>
Home													
WAN/Cellular		<div>AT Phone Number+15554482407</div>											
		<div>AT IP Address74.198.205.176</div>											
LAN		<div>AT Network StateNetwork Ready</div>											
		<div>AT Signal Strength (RSSI)-53</div>											
VPN		<div>AT Cell InfoCellInfo: TCH: 4381 RSSI: -53 LAC: 65200 CellID: 2810066</div>											
		<div>AT Current Network OperatorROGERS, 302720</div>											
Security		<div>AT Network Service TypeHSPA</div>											
		<div>AT ALEOS Software Version4.3.2.007</div>											
Services		<div>AT Signal Quality (ECIO)-7.5</div>											
		<div>AT Channel4381</div>											
GPS		<div>WAN/Cellular Bytes Sent4278</div>											
		<div>WAN/Cellular Bytes Rcvd3489</div>											
Serial		<div>AT Customer Device NameIs300_truck4</div>											
Applications													
About													

Figure 2-10: ACEmanager homepage

## LED Operation

### LED Colors

The four front panel LEDs show the status of various items and can be used as a troubleshooting aid. They are multi-colored:

- **Off**—No activity
- **Red**—Not functional
- **Yellow**—Limited functionality
- **Green**—Fully functional
- **Blinking**—Shows altered or reduced functionality

*Note: When the LEDs are cycling yellow, the reset button has been pushed and the device is reset to factory default settings.*

### Network LED

This monitors the cellular network.

- **Red**—No cellular network is present or the device is in radio passthru mode. (There is no network coverage at the location.)
- **Flashing red**—The device is attempting to connect to the cellular network.
- **Yellow**—The cellular network is found and the device is connecting.
- **Flashing yellow**—The cellular network is unavailable. (The device was unable to authenticate on the network.)
- **Green**—Connected to the cellular network.

- **Flashing Green**—The device is roaming.

## Signal LED

This shows the cellular network's signal level.

- **Flashing red**—No signal is present. (RSSI > -110 dBm)
- **Red**—A bad signal is present. (RSSI > -100 dBm or  $\leq$  -110 dBm)
- **Yellow**—A marginal signal is present. (RSSI > -85 dBm or  $\leq$  -100 dBm)
- **Green**—A good signal is present. (RSSI  $\leq$  -85 dBm)

## Activity LED

This shows the radio's activity.

- **Off**—The LED's normal appearance.
- **Flashing green**—The radio is transmitting or receiving.

## Power LED

This monitors the input power or shows if the device sees a GPS signal.

- **Off**—No power or input voltage  $\geq$  36VDC or  $\leq$  7.5VDC.
- **Red**—The device is not operational (failure or in low power mode)
- **Yellow**—The device is entering low power mode or system low level boot.
- **Green**—The device is connected to nominal power and is operating normally.
- **Green with a momentary yellow flash** – The device has a GPS fix.



## 3: Configuring the AirLink LS300

## 3

This chapter shows you how to communicate with and configure the Sierra Wireless AirLink LS300.

### Connection Ports

You can connect to the device's:

- USB port (Micro B)
- Ethernet port (RJ-45)
- Serial port (9-pin RS-232)

### USB Port

The USB port can be either a:

- Virtual Ethernet port
- Virtual serial port

Drivers must be installed on the PC for it to work in either mode. They are available for download at <http://www.sierrawireless.com/en/Support/Downloads.aspx>.

We recommend you:

- Use a USB 2.0 cable
- Connect directly to your computer for best throughput.

### Configuring with ACEmanager

---

*Note: For all of the configurable features available in ALEOS, see the ALEOS Configuration User Guide.*

---

AirLink devices are highly configurable when using the embedded ALEOS™ software. ACEmanager is a free utility included with every AirLink device. To access it:

1. Connect a laptop to the device with an Ethernet cable.
2. Start a web browser.
3. In the browser's address bar, enter the IP address:  
**http://192.168.13.31:9191.**
4. The login screen appears. Enter your name and password. The administrator user name is **user** and the password is **12345**.

The ACEmanager home page appears. From it you can access all of ALEOS's configurable features.

Status	WAN/Cellular	LAN	VPN	Security	Services	GPS	Events Reporting	Serial	Applications	I/O	Admin
Last updated time : 01-08-2013 07:51:23											
<div> <div> Home  WAN/Cellular  LAN  VPN  Security  Services  GPS  Serial  Applications  About </div> <div> <div>AT Phone Number</div> <div>+15554482407</div> </div> <div> <div>AT IP Address</div> <div>74.198.205.176</div> </div> <div> <div>AT Network State</div> <div>Network Ready</div> </div> <div> <div>AT Signal Strength (RSSI)</div> <div>-53</div> </div> <div> <div>AT Cell Info</div> <div>CellInfo: TCH: 4381 RSSI: -53 LAC: 65200 CellID: 2810066</div> </div> <div> <div>AT Current Network Operator</div> <div>ROGERS, 302720</div> </div> <div> <div>AT Network Service Type</div> <div>HSPA</div> </div> <div> <div>AT ALEOS Software Version</div> <div>4.3.2.007</div> </div> <div> <div>AT Signal Quality (ECIO)</div> <div>-7.5</div> </div> <div> <div>AT Channel</div> <div>4381</div> </div> <div> <div>WAN/Cellular Bytes Sent</div> <div>4278</div> </div> <div> <div>WAN/Cellular Bytes Rcvd</div> <div>3489</div> </div> <div> <div>AT Customer Device Name</div> <div>ls300_truck4</div> </div> </div>											

Figure 3-1: ACEmanager Home Page

## Configuring with AirVantage Management Service

AirLink devices can be configured with the AirVantage Management Service (AVMS) from Sierra Wireless. AVMS is a cloud-based application, available from your web browser, that provides remote monitoring and configuration for any number of your AirLink ALEOS devices.

Unlike ACEManager, AVMS allows the management of all your devices remotely from one user interface.

Some of its features include:

- Centralized, remote monitoring for all of your AirLink devices.
- Continuous status monitoring of important health data such as signal strength.
- Location monitoring, including world map views.
- Complete ALEOS reporting and configuration, including historical views of ALEOS information.
- Configure individual devices or use templates to perform batch configurations of your AirLink devices.
- Single click over-the-air firmware updates to all your devices.
- Compatible with all carriers or mobile network operators.

You can begin using AirVantage Management Service today. To get started either call your AirLink reseller or visit: [http://www.sierrawireless.com/en/productsandservices/AirLink/Device\\_Management.aspx](http://www.sierrawireless.com/en/productsandservices/AirLink/Device_Management.aspx)

## Configuring with AT Commands

The device can be commanded and configured with AT commands. They are listed in the ALEOS Configuration User Guide.

In ACEmanager, mouse over a red AT to the left of a listing to see a popup showing the AT command for that item. Signal Strength is shown below.

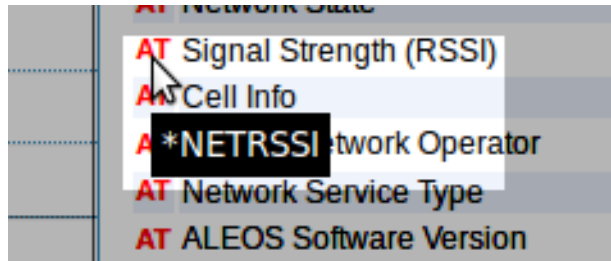


Figure 3-2: Mouse over for AT command

- Most AT commands are prefaced with AT. Exceptions are noted in the ALEOS Configuration User Guide.
- The acceptable format and parameters are listed with each command in the ALEOS Configuration User Guide.
- If you enter a recognized AT command, the device responds with “OK.” If the command is wrong, the device responds with “ERROR” or “Unsupported.”



## 4: AirLink LS300 Specifications

### 3G HSPA+ Models

Fallback to GSM/GPRS/EDGE

- 800/850/1900/2100 MHz HSPA+  
Sierra Wireless SL8090 radio module
- 900/2100 MHz HSPA+  
Sierra Wireless SL8092 radio module

Peak data rates

- Download (HSDPA Category 10)—14.4 Mbps (peak rate)
- Upload (HSUPA Category 6)—5.76 Mbps

### 3G EV-DO Models

Fallback CDMA 1xRTT

- Rev. A 800/1900 MHz  
Sierra Wireless SL5011 radio module
- Peak CDMA data rates
  - Download—3.1 Mbps (peak rate)
  - Upload—1.8 Mbps

### GPS Technology

- Protocols: TAIP, NMEA, RAP
- HSPA+ Models
  - Acquisition time: < 3 seconds hot start; < 45 seconds cold start
  - Accuracy < 10 m
  - Tracking sensitivity: -155 dBm
- CDMA Models
  - 12 Channel, continuous tracking
  - Acquisition time: 9 sec hot start, 39 sec cold start
  - Accuracy: < 3 m (50%), < 8 m (90%)
  - Tracking sensitivity: -160 dBm

### Protocols

- Network: TCP/IP, UDP/IP, DNS
- Routing: NAT, Host Port Routing, DHCP, PPPoE, VLAN, VRRP, Reliable Static Route
- Application: SMS, Telnet/SSH, Reverse Telnet, SMTP, SNMP, Sntp
- Serial: TCP/UDP PAD Mode, Modbus (ASCII, RTU, Variable), PPP
- GPS: NMEA 0183 V3.0, TAIP, RAP

## Events Reporting

- Event Types: Digital Input, GPS/AVL, Network parameters, Data usage, Timer, Power, Device temperature
- Report Types: SMS, Email, SNMP Trap, Relay output, GPS RAP report, Events protocol message to server

## VPN/Security

- IPsec, SSL, and GRE VPN client
- Up to 5 VPN tunnels
- IKE encryption
- Port forwarding and DMZ
- Port filtering
- Trusted IP
- MAC address filtering

## Device Management

- AirVantage™ Management Service cloud-based device management application
- ACEManager™ device configuration utility

## ALEOS Application Framework

- Lua language coding platform
- Remote application management
- Eclipse-based IDE
- Integrated real-time debugging

## Power Consumption

All values in mA @ 12VDC

- HSPA+: Idle: 224, Typ 245, Max 430
- CDMA: Idle 220, Typ 257, Max 427
- Low power standby mode: < 68
- Analog Ignition Sense and Power Management
- Input Voltage: 7–28 VDC

## Environmental

- Operating temperature: -30°C to +70°C (-22°F to +158°F)
- Storage temperature: -40°C to +85°C (-40°F to +185°F)
- Humidity: 90% RH @ 60°C (140°F)
- Military Spec MIL-STD-810 conformance to thermal, mechanical shock, and humidity



## Host Interfaces

- 10/100 Base-T RJ-45 Ethernet
- RS-232 serial port
- USB V2.0 Micro-B connector
- 2 SMA antenna connectors (Primary, GPS/Rx Diversity)
- Active antenna support

## Industry Certifications

- FCC
- Industry Canada
- CE
- PTCRB
- R&TTE
- RoHS Compliant, Class 1 Div 2 certified

## Mobile Network Operator Approval

- Approved for deployment by Verizon Wireless, AT&T, and Sprint
- Consult [www.sierrawireless.com](http://www.sierrawireless.com) for complete list of operator approval

## Input/Output

- Configurable I/O pin on power connector
- Digital Input ON voltage: 3.3 to 30 VDC
- Digital Input OFF voltage: 0 to 1.2 VDC
- Analog Input voltage: 0 to 30 VDC
- Open connector output > 200 mA @ 30 VDC: 3.3 to 30 VDC

## Dimensions

- 3.0 in x 3.5 in x 1.0 in  
(76 mm x 90 mm x 25 mm)
- 6.7 Oz (190 g)

## Mechanical

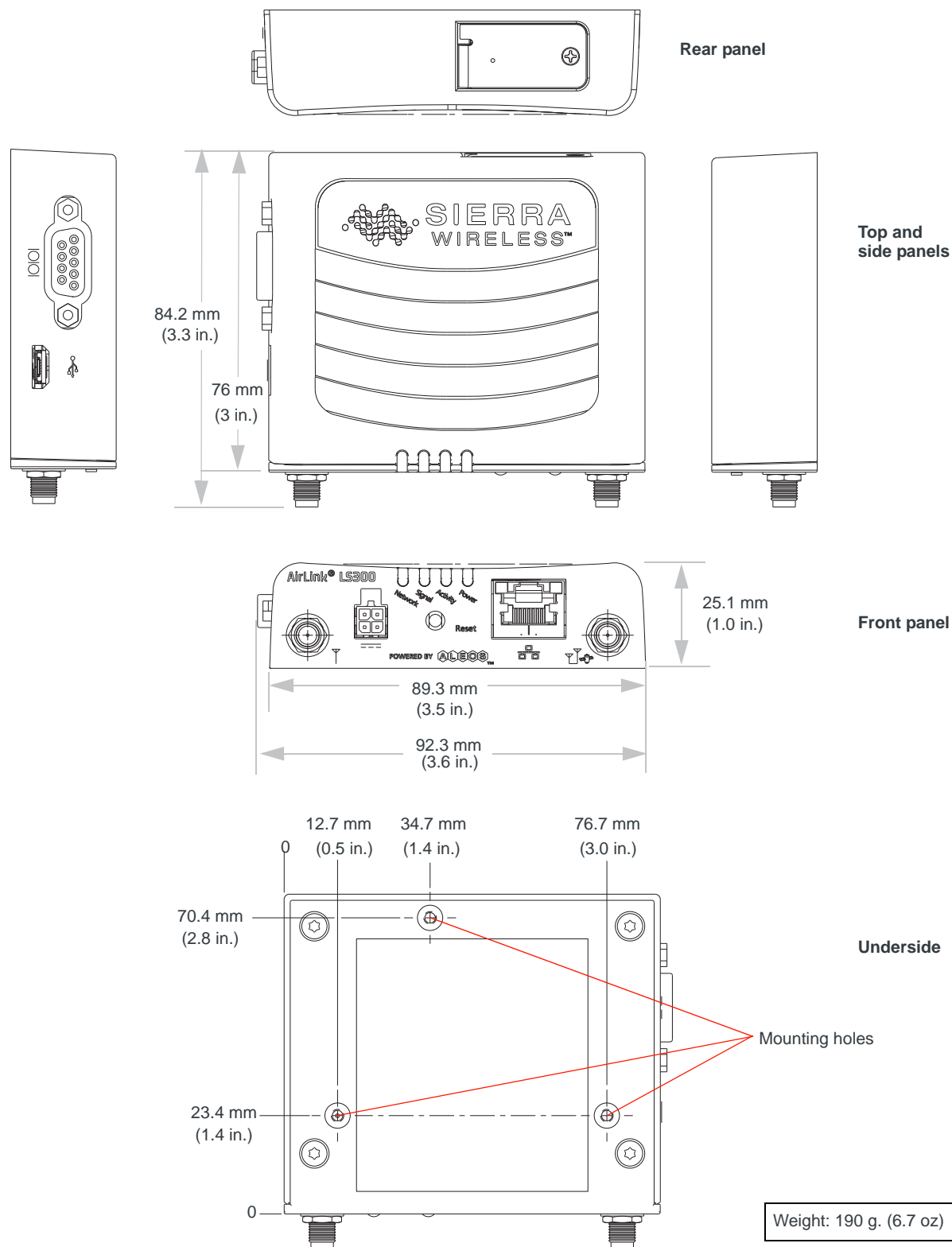


Figure 4-1: AirLink LS300 Mechanical Specifications

## >> 5: Regulatory Information

## 5

### Federal Communications Commission Notice (FCC United States)

Electronic devices, including computers and wireless devices, generate RF energy incidental to their intended function and are therefore subject to FCC rule and regulations. This equipment has been tested to, and found to be within the acceptable limits for a Class A digital device, pursuant to part 15 of the FCC Rules.

This equipment generates radio frequency energy and is designed for use in accordance with the manufacturer's user manual. However, there is no guarantee that interference will not occur in any particular installation.

If this equipment causes harmful interference to radio or television reception, which can be determined by turning the equipment off and on, you are encouraged to try to correct the interference by one or more of the following measures:

- Reorient or relocate the receiving antenna.
- Increase the separation between the equipment and the receiver.
- Connect the equipment into an outlet on a circuit different from that to which the receiver is connected.
- Consult the dealer or an experienced radio/television technician for help.

This device complies with Part 15 of the Federal Communications Commission (FCC) Rules. Operation is subject to the following two conditions:

1. This device may not cause harmful interference.
2. This device must accept any interference.

---

**Warning:** *Changes or modifications to this device not expressly approved by Sierra Wireless could void the user's authority to operate this equipment.*

---

### Notice for Canadian Users

This Class A digital apparatus complies with ICES-003.

### Antenna Considerations

Although the antenna mode(s) used with these devices meet(s) the Industry Canada Radio Frequency requirements, it is possible that future customers may swap them for different ones without the

network provider's knowledge and approval. Such customers must be made aware of, and follow, the radio frequency requirements applied in this technical approval:

- RSS-102 "Radio Frequency Exposure Compliance for Radio Communication Apparatus (All Frequency Bands)."
- RSS-129 "800 MHz Dual-Mode CDMA Cellular Telephones."
- RSS-132e "Cellular Telephones Employing New Technologies Operating in the Bands 824-849 MHz and 869-894 MHz."

## RF Exposure

In accordance with FCC/IC requirements of human exposure to radio frequency fields, the radiating element shall be installed such that a minimum separation distance of 20cm should be maintained from the antenna and the user's body.

**Warning:** *This product is only to be installed by qualified personnel!*

To comply with FCC/IC regulations limiting both maximum RF output power and human exposure to RF radiation, the maximum antenna gain must not exceed the specifications listed below for the device used.

		FCC ID/IC	
		N7NSL8090 / 2417C-SL8090	N7NSL5011 / 2417C-SL5011
Antenna Gain	Cellular Band	6.2 dBi	8.5 dBi
	PCS Band	3.8 dBi	4.15 dBi

## EU

Sierra Wireless hereby declares the AirLink LS300 devices conform to all the essential requirements of Directive 1999/5/EC.

Products are marked with a CE and notified body number.

**C € 0682**

The Declaration of Conformity made under Directive 1999/5/EC is available for viewing at the following location in the EU community.

Sierra Wireless (UK) Limited  
Suite 5, The Hub Fowler Avenue  
Farnborough Business Park  
Farnborough, United Kingdom GU14 7JP

**WEEE Notice**



If you purchased your AirLink LS300 in Europe, please return it to your dealer or supplier at the end of its life. WEEE products may be recognized by their wheeled bin label on the product label.



# >> Index

## A

ACEmanager, configuring device with, [27](#)  
ACEview, monitoring device with, [13](#)  
Activity LED, [26](#)  
AirVantage *See* AVMS.  
ALEOS  
    default user name and password, [24](#)  
    description of, [12](#)  
Analog voltage input sensing, [17](#)  
Antenna  
    connection of, [23](#)  
    GPS installation, [23](#)  
    maximum gain, [10](#)  
    receive and transmit port, [10](#)  
    safe mounting, [19](#)  
AT commands, [28](#)  
AVMS  
    configuring with, [28](#)  
    features, [14](#)

## B

Battery, connection to, [16](#)

## C

Cables, power and data, connection of, [23](#)  
Cloud computing with AVMS  
Communication  
    ACEmanager, using, [27](#)  
    AirVantage  
    AT commands, using, [28](#)  
    command line prompt, using, [25](#)  
    connection, [23](#)  
    default password and user name, [24](#)  
    Ethernet, connection and test, [24](#)  
    no signal present, [26](#)  
    TCP PAD, [11](#)  
    UDP PAD, [11](#)  
    virtual Ethernet port via USB, [11](#)  
Configuring with  
    ACEmanager, [27](#)  
    AirVantage, [28](#)  
    AT commands, [28](#)  
Connecting to devices and power, [23](#)  
Connectors, [10](#)

## D

Default  
    settings for device, reset to, [11](#)  
    username and password, [24](#)  
Description, product, [9](#)

## E

Ethernet  
    computer connection and log in, [24](#)  
    virtual Ethernet port, [27](#)

## G

GPS  
    antenna installation, [23](#)  
    connected to device, LED, [26](#)  
GPS antenna, installing, [23](#)

## I

Installing SIM card, [19](#)  
IP address  
    for device, [24](#)  
    obtaining with command line prompt, [25](#)

## L

LED  
    cycling yellow, [25](#)  
    description of LED, [25](#)

## M

Measuring external voltages, [17](#)  
Mounting  
    brackets, [20](#)  
    general instructions, [19](#)  
    on DIN rail, [21](#)  
mounting  
    DIN rail, [21](#)  
    flat surface, [20](#)

## N

Network LED, [25](#)

## P

Password and user name, default, [24](#)  
Pinging device with command line prompt, [25](#)  
Ports, [9](#)  
Power  
    battery connection, [16](#)  
    connected to device, [26](#)  
    connector, [11](#)  
    connector, measuring external voltages, [17](#)  
    LED, [26](#)  
Power connector, [15](#)

### R

Receiving signal, LED, [26](#)  
Regulatory information, [35](#)  
Reset, [11](#)  
Reset device, [25](#)  
RS-232 port, [11](#)

### S

Serial port  
    9-pin, [11](#)  
    virtual serial port, [27](#)  
Signal LED, [26](#)  
SIM card  
    connector, [12](#)  
    installing, [19](#)  
Specifications, [31](#)  
Starting device, [24](#)

### T

TCP PAD, [11](#)

Turn on device, [24](#)

### U

UDP PAD, [11](#)  
USB  
    virtual Ethernet port, [11](#)  
User name and password, default, [24](#)

### V

Vehicle  
    antenna, safe mounting, [19](#)  
    battery connection, [16](#)  
    GPS antenna installation, [23](#)  
    mounting kit, [21](#)  
Voltage, monitoring battery or power input, [17](#)

### Y

Yellow LED, cycling, [25](#)





