

Symptom:

The SZW133's LCD Screen displays gibberish characters..

Cause:

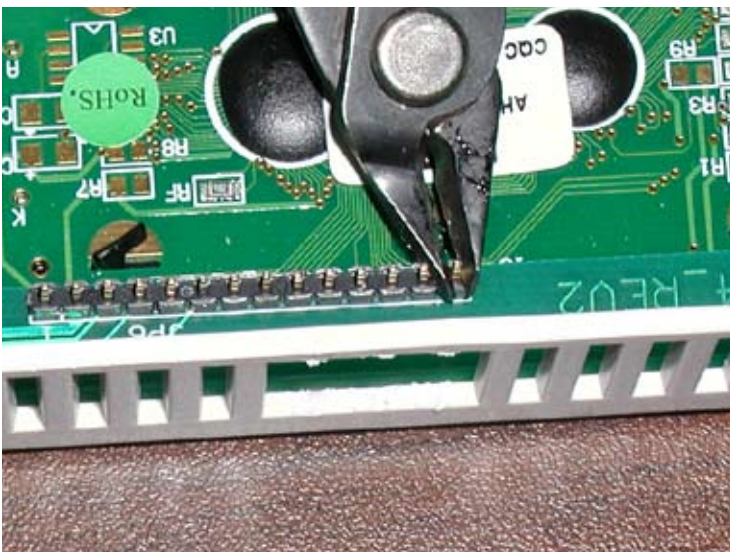
Some SZW133s were manufactured with longer leads connecting the LCD screen to the PCB, and when the top half and bottom half are screwed together tightly, it would cause a short across some of the LCD leads as the leads made contact with the top of a capacitor. See picture below (part of the enclosure has been removed).



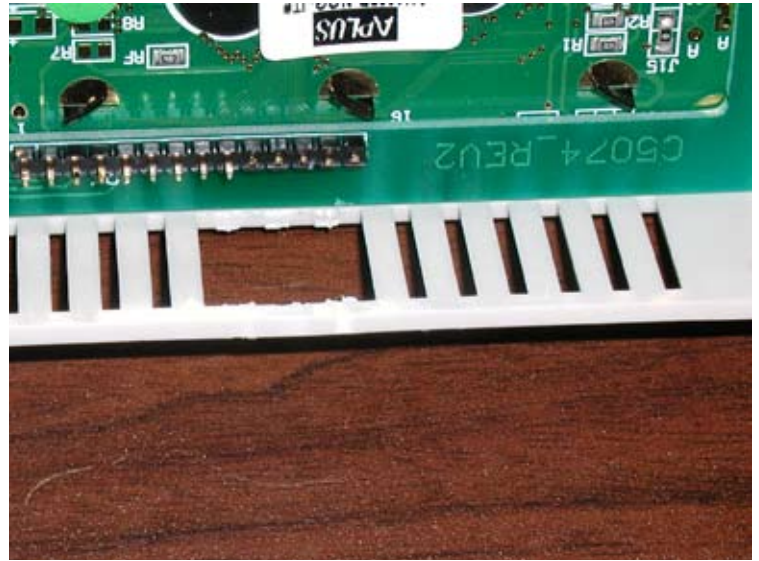
Solution:

Trim the lead length to prevent the leads from hitting the capacitor.

1. Separate the two halves (cover and base) of the thermostat.
2. Remove power from the 24+/- (Black) terminal block.
3. Using side cutters, trim the five (5) right hand pins down the black plastic stop.



4. After trimming those pins, there should be plenty of room for the capacitor.



5. Re-apply power to the 24+/- (Black) terminal block.
6. Rejoin the two halves (cover and base) of the thermostat