

Programming Network Settings for QD2020i(e) onsite

Required Materials

- A D9-F to D9-F cable (Serial Type Cable) wired straight through. This cable is included with each QD2020i and QD2020ie Communications Gateway.

- Hyperterminal installed on your computer. Hyperterminal is included with each Windows installation disk, although it may not be installed by default on your computer.

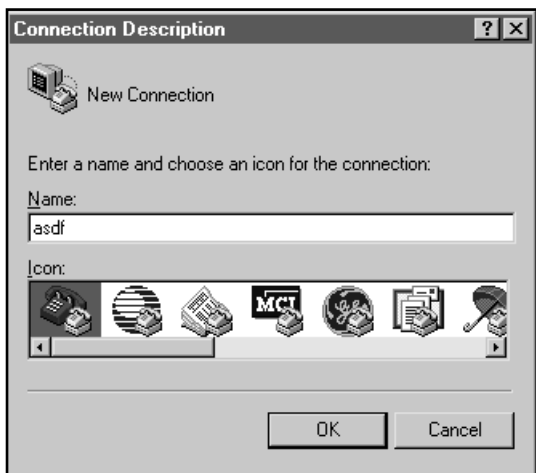
Locally programming network settings with the QD2020i(e)

The QD2020i(e) is powered with 24VAC; We include a wall plugin supply 120VAC to 24VAC for power. Remove the QD2020i(e) power connector terminal and attach the one end of the power supply. Then plug the power supply into a wall outlet.

1. Connect one end of the included serial cable to the connector labeled RS232 COM PORT on the QD2020i(e). Connect the other end of the cable into serial port located on the back of the computer. (You may have to remove a PDA connection or other connection to do this). For laptops that do not have a serial port, you may need to purchase a USB to serial port device.

2. Run Hyperterminal. Hyperterminal can typically be found in the start menu under *Programs > Accessories > Communications*. If it is not installed you will need to get the Windows installation disk to install.

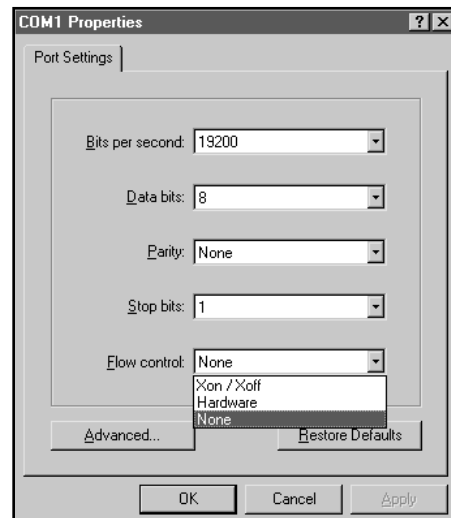
3. In *connection description* type in whatever you want to use to designate the name of the connection. Then hit **OK**



4. In *Connect To* window under the *Connect using* select **Direct to Com1** (Or whichever port you are connected to). Hit **OK**



5. In the *Com1 Properties* window fill in the properties as illustrated below. Hit **OK**

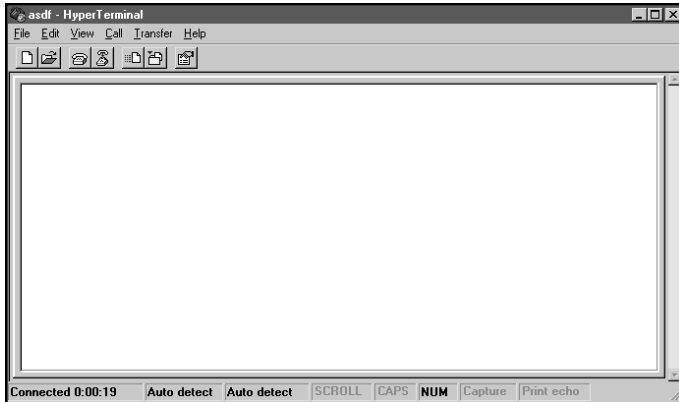


6. You are now configured to communicate with the QD2020i(ie). To begin type in the blank window:

\$setup??

Then hit enter

Note - when you are typing \$setup?? in Hyperterminal, you will see nothing until the menu appears. If you type it in, hit enter and still see nothing, hit enter (<CR>) a couple of times and try again.



7. A menu system will appear. That looks something like this for the QD2020ie -

Internet Parameter Update

HARDWARE ID: 001D016E
MAC ADDRESS: 000394060081
PART NUMBER: CO561AD- L
FIRMWARE VERSION: IL701B06 24.12.2001
BOOTBLOCK VERSION: 0702
ACTIVE IP: 172.31.39.199

A - DNS ADDRESS 1: 172.31.249.253
B - DNS ADDRESS 2: 0.0.0.0
D - DEFAULT IP: 172.31.39.100
M - SUBNET MASK: 255.255.255.0
G - GATEWAY IP: 172.31.39.254
S - SMTP SERVER: 172.31.10.18
R - RETURN EMAIL: qd2020ie@tcsbasys.com
3 - POP3 SERVER:
E - POP3 MAILBOX:
W - POP3 PASSWORD:
U - UBQ URL: 216.165.178.150

Enter letter of item to change (x to Exit) - x

For the QD2020i the menu looks like this -
Internet Parameter Update

HARDWARE ID: 1A00025D
PART NUMBER: CO561AD- S
FIRMWARE VERSION: IS701B19 25.4.2002
BOOTBLOCK VERSION: 0703
ACTIVE IP: 0.0.0.0

A - DNS ADDRESS 1: 0.0.0.0
B - DNS ADDRESS 2: 0.0.0.0
N - ISP PHONE #1: 5555551
F - ISP PHONE #2:
L - ISP LOGIN: ispusername
P - PASSWORD: *****
S - SMTP SERVER: mail.isp.net
R - RETURN EMAIL: ispusername@isp.net
3 - POP3 SERVER: mail.isp.net
E - POP3 MAILBOX: ispusername
W - POP3 PASSWORD: *****
U - UBQ URL: 216.165.178.150

Enter letter of item to change (x to Exit) -- _

Make changes to the setting by hitting the letter designated in the list. Then enter in the pertinent network programming information. When you are complete hit enter.

Note - **If unknown SMTP server, enter 216.165.165.174 Ubiquity URL, 216.165.178.150**

The QD2020i(e) requires a return email address to work, If unknown use QD2020@tcsbasys.com

8. Once you have completed the changes hit x then enter to quit.

9. The QD2020i(ie) will confirm that the updates have been committed with the following screen prompts:

Updating Internet Parameters

All Internet Parameters have been updated.

Other Notes - In File > Properties > Settings > ASCII Setup, you can turn on the echo. <Windows 95 release 2.> The included Hyperterminal with Windows 95 release 2 is the only terminal p where the echo worked consistently. Other versions of Hyperterminal may not echo.