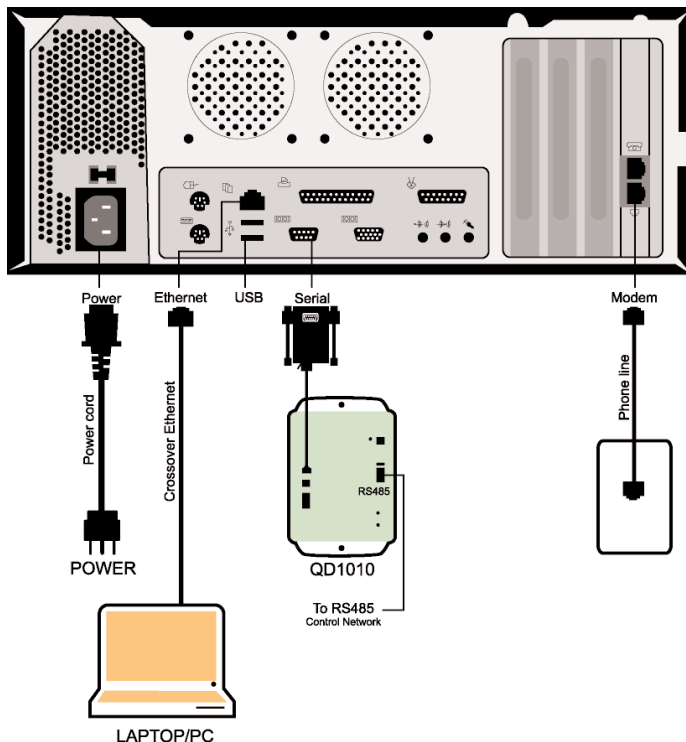


QD2040 Communication Gateway

EZ Installation & Programming Instructions



CONFIGURING THE QD2040 COMMUNICATION SETTINGS

WARNING! THE QD2040 COMES FROM THE FACTORY WITH DHCP SERVER *ENABLED!* DO NOT HOOK THIS INTO A COMPUTER NETWORK, IF YOU ARE UNSURE IF IT HAS DHCP ENABLED!

1. Plug your laptop or PC with the enclosed ethernet crossover cable into the QD2040.

NOTE: DESPITE ITS APPEARANCE THIS IS A UNIQUE CABLE DESIGNED ESPECIALLY FOR DIRECT CONNECTIONS BETWEEN TWO COMPUTERS, OTHER ETHERNET CABLES WILL NOT WORK.

If your laptop or computer does not have an ethernet connection you will need to purchase a 10/100 Ethernet card at a computer store.

2. Restart your laptop.
3. On your laptop open up an internet browser (TCS recommends Internet Explorer 4.0 or later).
4. In the address bar of the browser type in the following:
`http://192.168.1.1`

If nothing appears, it probably means that your computer that you are using is not configured for DHCP.

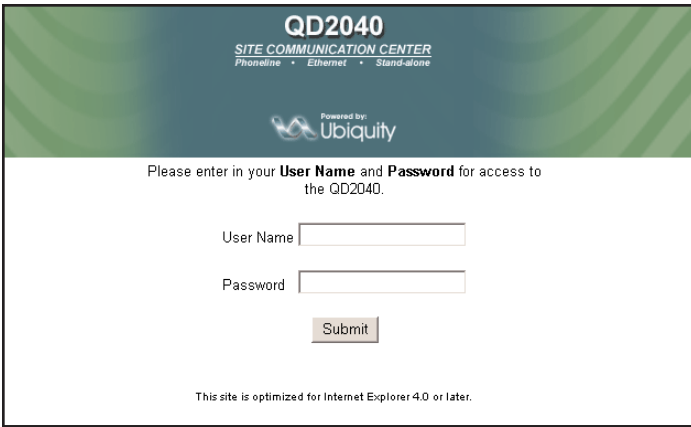
- To properly configure it, right click the "My Network Places" on your desktop and choose "Properties".
- In Network Components under the configuration tab, highlight the TCP / IP that has the name of your ethernet card next to it. Click the "Properties" button.
- Under the IP Address tab click the "Obtain an IP address automatically" radio button. Then click "OK"
- Click "OK" again and restart your computer. After you are done you should be ready for DHCP.

COMMISSIONING THE QD2040 NETWORK

1. After the controllers have been networked together and are properly addressed, plug the controller network (RS485 network) into the QD1010, attaching the cables to the RS485 terminal block.
2. Use the included serial cable (RS232) to attach the QD1010 RS232 input and the serial connection on the QD2040.
3. Use the included AC adapter to plug the QD1010 into an electrical outlet.
4. Use the included AC power cord to plug the QD2040 into an electrical outlet.

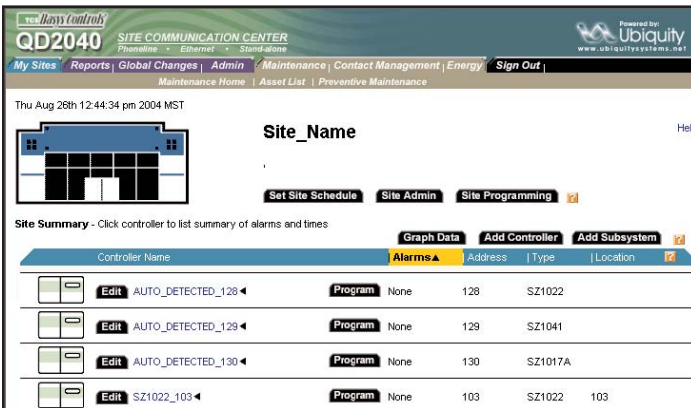
At this point the QD2040 will automatically start up (If the QD2040 does not power up automatically, simply press the power button on the front of the unit). Once the internal application has cycled through (approx. 2-3 minutes), it will begin polling the network. You can tell if this is happening correctly by looking at the RS232 LED on the QD1010. *If it blinks occasionally in rapid succession it is working correctly.*

In the event you are installing more than 64 controllers, you may need to configure more ports. For more information on that refer to the QD2040 instructions.



5. Click "OK" to accept the SSL certificate. In the login page use:

username - admin
password - password

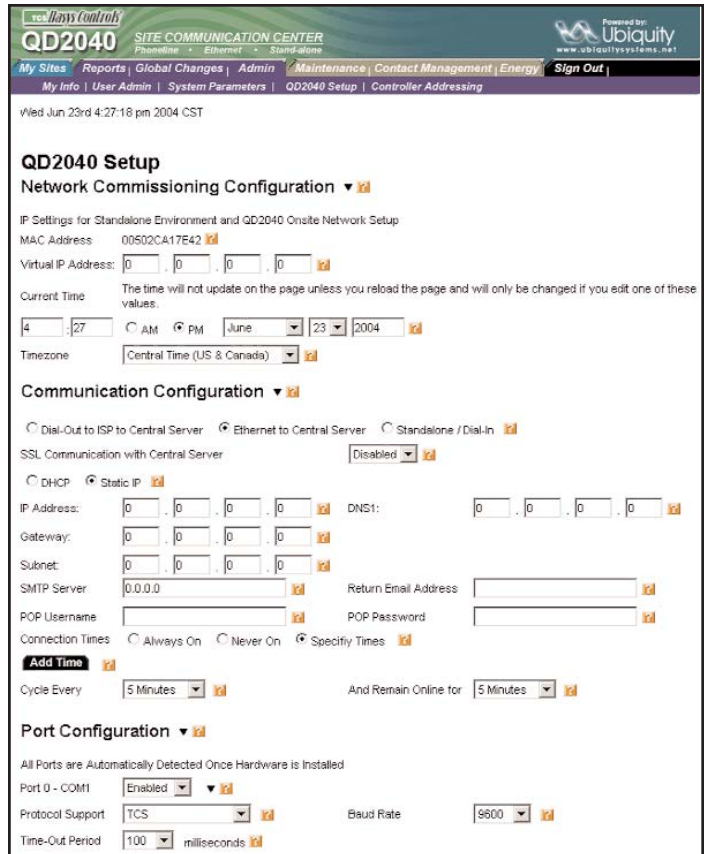


6. You will come to the main site page. If your controllers are addressed correctly, you should see your controllers on the main table in the page.

7. Go to the top of the page and point to "Admin" with the cursor, in the links that appear underneath choose "QD2040 Admin"

On this page you configure how the QD2040 will communicate. Your options are either:

- **Stand-alone / Dial-In** - The QD2040 acts independently of a central server. To access it you either use your laptop and crossover cable or dial into it directly. In this mode, the QD2040 can also be accessed over a computer network.
- **Dial-up ISP to Central Server** - The QD2040 is configured to dial out to an ISP, and then communicate with the central Ubiquity server.
- **Ethernet to Central Server** - The QD2040 is configured to go out to the internet through a corporate network and communicate with the central Ubiquity Server.



8. On this page uncheck the "Setup DHCP Server" checkbox if you are planning on using the QD2040 on a computer network or to communicate with a central server. Once you are done with initial setup it is recommended regardless of configuration that you turn off this option.

9. Go down to "Communication Configuration" and select your preferred method of communications.

10. Once that is selected the appropriate boxes will appear for the required information for properly configuring it.

11. Enter in the appropriate communications information for the unit to communicate with Ubiquity or an internal network. (If you need additional help click on the Question Mark next to each box)

12. Click the Submit button

Once you have saved the changes, it will take up to 10 minutes for the communications configuration to change.

If you are using it with the central server, you will need to go to <http://www.ubiquitysystems.net> to see your site information, it will not appear directly within the QD2040 anymore.

For information on using Ubiquity go to <http://www.ubiquitysystems.net> and download the manual.