

# Ubiquity Enhanced Monitoring

EZ Installation for Using the My Sites and Site Home pages

## My Sites Page



The new My Sites page has the following new features –

- 1 – Online status.** This is included in the column adjacent to the Site Name in the Site Table.
- 2 – Monitoring Marquee.** This utilizes our new aggregate points capability. Click the edit button next to the Marquee to include one of a number of default Ubiquity monitoring points including:

- Average Room Temperature
- Cumulative Cooling / Heating Stages that are “ON”
- Percentage of Building Occupied

Click the checkbox next to the points you wish to include. Or click the “Add Point” to include a new unique point.

*\*This functionality requires the QD2040 with version 1.3.1 firmware or later*

**3 – Alarm Details.** Click on this to expand and see all of the active alarms for the site.

**4 – Building Information.** Click on this to expand and see information about the building including address, Time zone, Hardware ID, Occupancy Schedule, Square Footage and more.

**5 – User Access.** Click on this to expand and see all of the users that have access to this site.

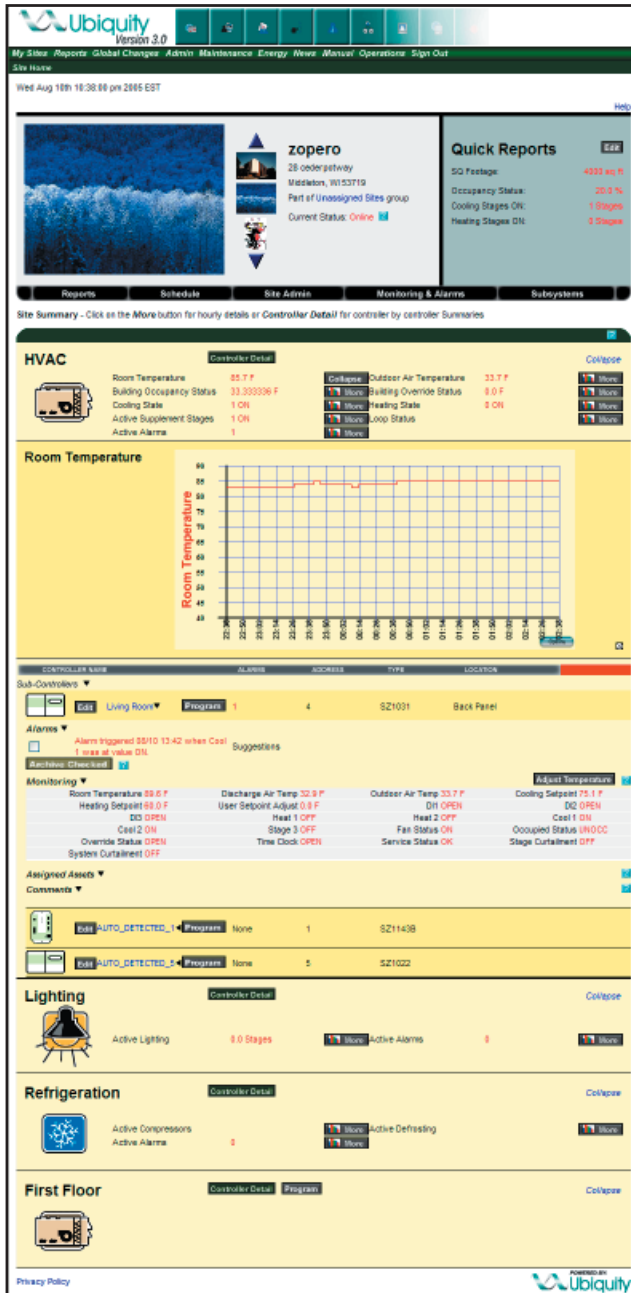
**6 – Popup Alarming.** By simply logging in and staying on the My Sites page you will be notified of new alarms for all included sites via a Popup window.

If you wish you can change this page back to the original “Version 2.0” style by clicking the Presentation Options and click the “Simple View”.

# Ubiquity Enhanced Monitoring

EZ Installation for Using the My Sites and Site Home pages

## Site Home Page



The new Site Home page has the following features and changes –

**1 – Multiple Site images.** Click on the large image to upload new images.

**2 – Quick Reports.** You can use the same type of default points that are on the marquee on the My Sites C:

page and define new aggregated points by clicking the “Edit” button. To define the Square Footage click on the Site Admin button below the Quick Reports.

- 3 – Black Bar Buttons.** These include –
  - Reports** – For viewing different types of reports
  - Schedule** – For editing and creating site schedules
  - Site Admin** – For entering in address, time zone, and square footage
  - Monitoring & Alarms (Former Site Programming)** – For setting up alarms
  - Subsystems** – For setting up the new “Functional” Sub-System or configuring HVAC Sub-Systems, such as Loop Control, VAV, etc.

**4 – Functional Sub-Systems.** The site is divided into logical functional Sub-Systems, dictated by the type of controllers on the network. Ubiquity automatically creates these Sub-Systems, however you can create new Sub-Systems by clicking the “Subsystems” button to group them differently. Examples include – By floor, by control type, by program setting, etc.

Each functional Sub-System also includes aggregated monitoring points specific to it. The Ubiquity created Sub-Systems are not modifiable, however new User defined Sub-Systems can have any number of new points created for monitoring.

*\*Monitoring Points in the Sub-Systems requires QD2040 version 1.3.1 firmware or later.*

**5 – More Button.** Click on the “More” button next to any monitoring point and get a graph snapshot of the last four hours for that point.

*\*Requires the Flash plugin. Available for free at <http://www.macromedia.com>*

**6 –Controller Detail.** Click the Controller Detail button to view the controller table and to expand them to see alarms specific to the controller, monitoring table, assigned assets and the new comments section.

*\*For the QD2020i and the QD2020ie this page opens the controller tables by default.*

For additional details on Creating Aggregated Points, Setting up Sub-Systems, and further configuring these pages, consult the Manual, Section 4.