

## Sequence of Operation

### Cool mode:

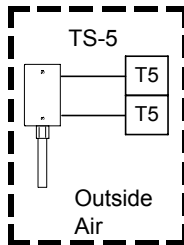
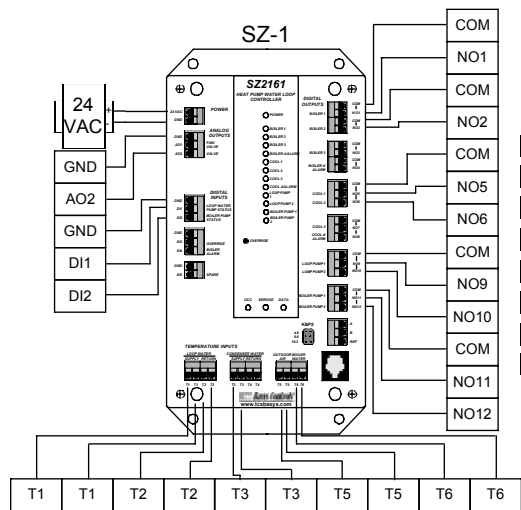
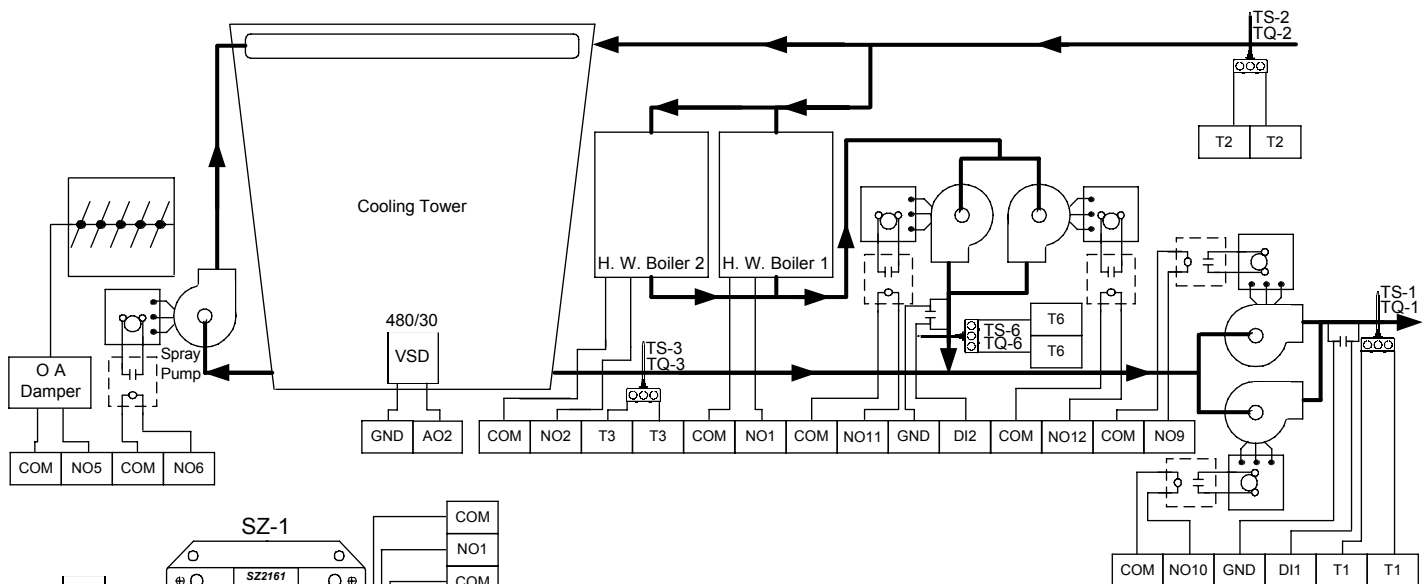
The SZ2161 will maintain a constant condenser water temperature by opening an outdoor damper, turning on a spray pump and modulating a VSD.

### Heat mode:

The SZ2161 will maintain a constant boiler supply water temperature by cycling the two boilers.

Once the water temperature is controlled to the correct temperature the SZ2161 will control Boiler Pump 1 & 2 and Loop Pump 1 & 2 to maintain the desired water Loop Supply Temperature. Each pair of pumps will be run in a lead/lag configuration, if one of the two pumps in each pair would fail the other will take over automatically.

## Heat Pump Water Loop



equipment schedule			
Item	Quantity	Mod. Number	Description
SZ-1	1	SZ2161	HPWL Controller
TS-1	1	TS1002	Temp. Sensor
TQ-1	1	TQ1110	8" Thermowell
TS-2	1	TS1002	Temp. Sensor
TQ-2	1	TQ1110	8" Thermowell
TS-3	1	TS1003	Temp. Sensor
TQ-3	1	TQ1110	8" Thermowell
TS-5	1	TS1003	Outdoor Sensor
TS-6	1	TS1002	Temp. Sensor
TQ-6	1	TQ1110	8" Thermowell